



**PRINCE WILLIAM**  
COUNTY

# COVID-19 Operational Update

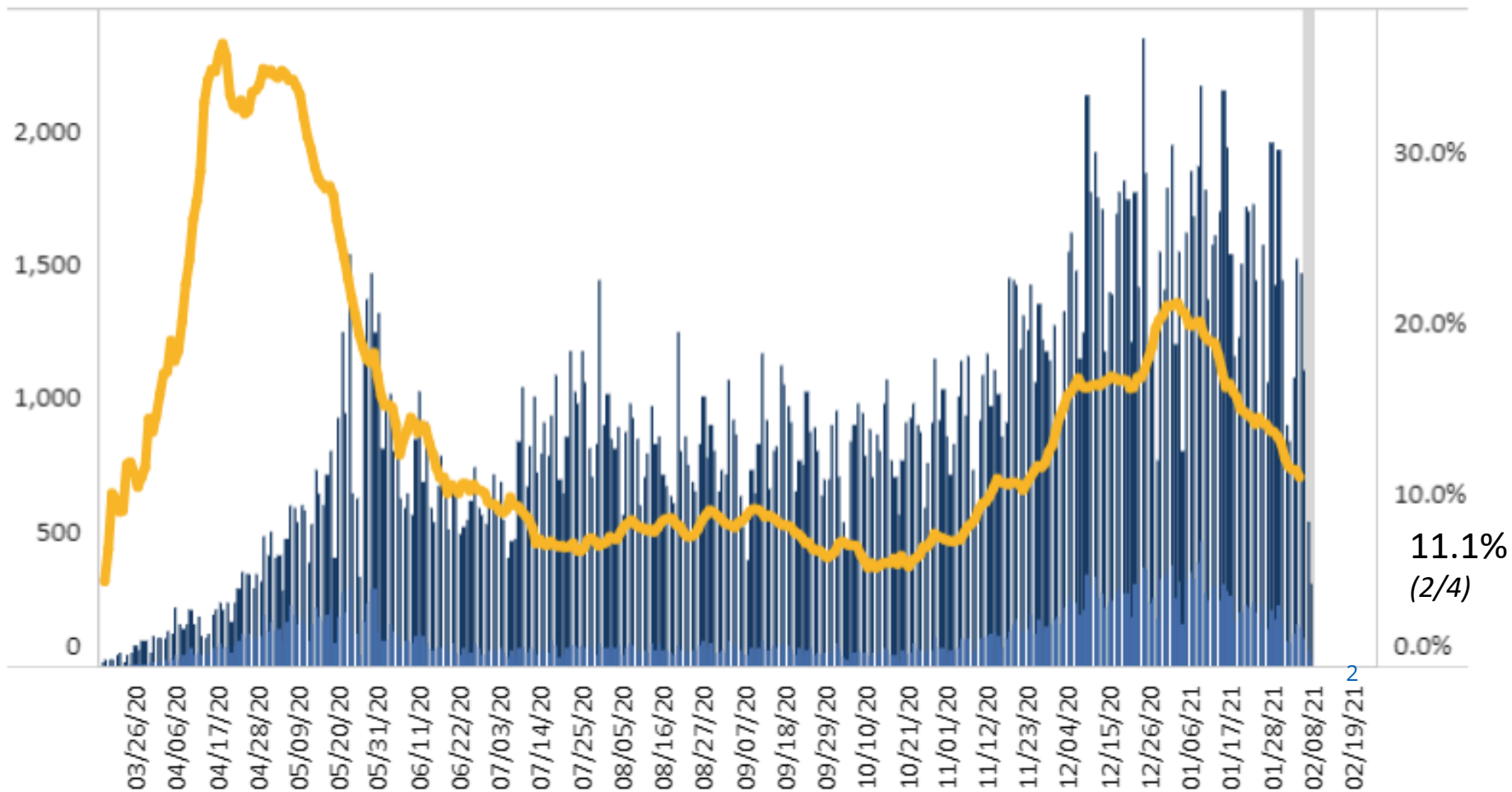
Brian Misner  
Emergency Management Coordinator

February 9, 2021

# Number of Positive Tests vs. Tests Conducted - Cumulative

Number of Testing Encounters, Number of Positive Testing Encounters, and Percent Positivity\*\* by Lab Report Date - Prince William, PCR Only




- Percent Positivity, 7-Day Moving Average
- Positive Testing Encounters
- Number of Testing Encounters



# COVID19 Testing Update

- We have reduced our mobile test sites from 11 to 7 locations per week.
- Still at the same capacity of 200 tests/day.
- Each of the designated mobile sites are being visited once per week.
- Reasons for change:
  - 60 percent decrease in demand over the last month
  - Weather impacts on staff and logistics
- We are closely monitoring the situation and plan to adjust accordingly.

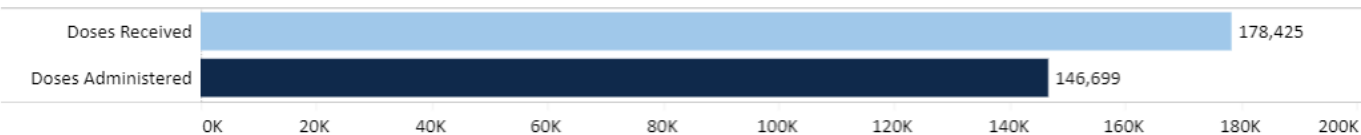
# Vaccine Distribution Phases

Prince William Health District COVID-19 Vaccination Status   Last Updated 2/1/2021					
<p>Virginia is currently in these phases</p> <div style="display: flex; justify-content: space-around; align-items: center;"> <div style="text-align: center;"> <p><b>PHASE 1a</b></p>  <p>VACCINE AVAILABILITY █ █ █</p> </div> <div style="text-align: center;"> <p><b>PHASE 1b</b></p>  <p>VACCINE AVAILABILITY █ █</p> </div> <div style="text-align: center;"> <p><b>PHASE 1c</b></p>  <p>VACCINE AVAILABILITY █</p> </div> </div> <p style="text-align: right; margin-right: 100px;">Future phase to come</p>					
Phase 1a		Phase 1b Frontline Essential Workers		Phase 1c Other Essential Workers	
All Categories of Healthcare Workers and Long-Term Care Facilities	<b>In Progress</b>	1. Police, Fire, and Hazmat Workers	<b>In-Progress</b>	1. Energy	<i>Not Yet Eligible</i>
		2. Corrections and homeless shelter workers	<b>In-Progress</b>	2. Water, wastewater, and waste removal workers	<i>Not Yet Eligible</i>
		3. Childcare/PreK-12 Teachers/Staff	<b>In-Progress</b>	3. Housing Construction	<i>Not Yet Eligible</i>
		4. Food and Agriculture (including Veterinarians)	<i>Not Yet Eligible</i>	4. Food Service	<i>Not Yet Eligible</i>
		5. Manufacturing	<i>Not Yet Eligible</i>	5. Transportation and Logistics	<i>Not Yet Eligible</i>
		6. Grocery store workers	<i>Not Yet Eligible</i>	6. Institutions of Higher Education Faculty / Staff	<i>Not Yet Eligible</i>
		7. Public transit workers	<i>Not Yet Eligible</i>	7. Finance	<i>Not Yet Eligible</i>
		8. Mail carriers (USPS and private)	<i>Not Yet Eligible</i>	8. Information Technology & Communication	<i>Not Yet Eligible</i>
		9. Officials needed to maintain continuity of government	<i>Not Yet Eligible</i>	9. Media	<i>Not Yet Eligible</i>
		<b>AND</b>		10. Legal Services	<i>Not Yet Eligible</i>
		Persons Aged 65 years and Older	<b>In-Progress</b>	11. Public Safety (Engineers)	<i>Not Yet Eligible</i>
		People Living in Correctional Facilities, Homeless Shelters and Migrant Labor Camps.	<b>In-Progress</b>	12. Other Public Health Workers	<i>Not Yet Eligible</i>
		People aged 16 - 64 years with a <a href="#">High-Risk Medical Condition or Disability</a>	<b>In-Progress</b>		

# Statewide Vaccine Status

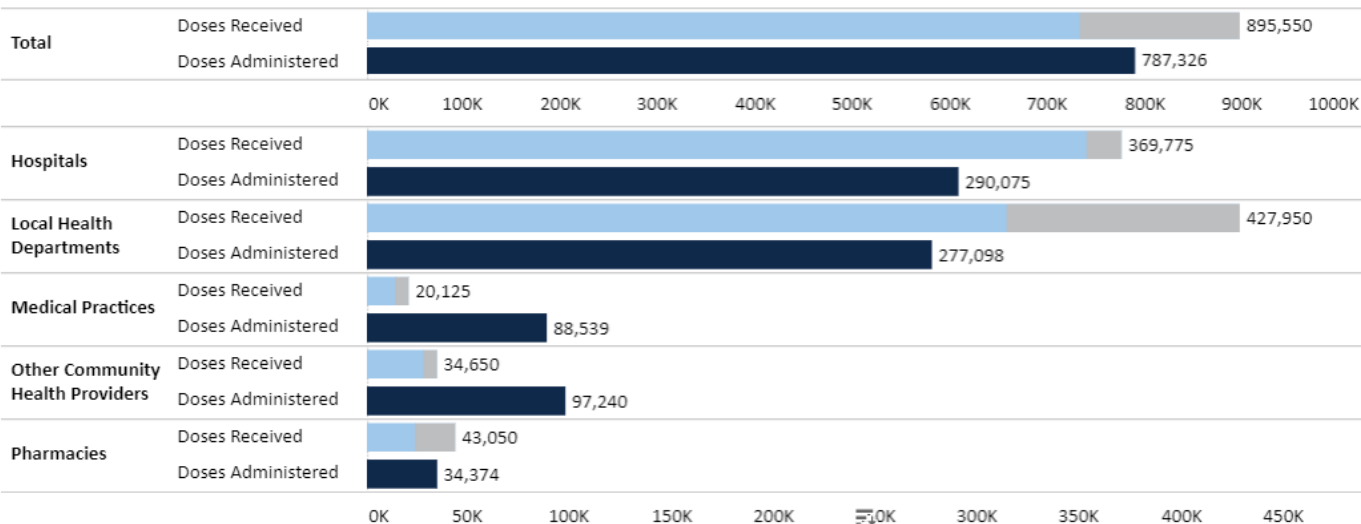
<b>Total Vaccine Doses Received</b> <b>1,580,800</b>	<b>First Doses Administered</b> (out of received) <b>87.9%</b>	<b>Second Doses Administered</b> (out of received) <b>33.8%</b>
First and second doses do not include 178,425 doses received through the Federal LTCF Program.		

## Federal Long-Term Care Facility (LTCF) Program Doses Administered and Received



## Vaccine Received and Administered through Virginia's State COVID-19 Vaccination Program (Does not include Federal LTCF Program) COVID-19 Vaccine Received and Administered by Facility Type and Dose\*

### First Doses



# Statewide Vaccine Summary



Total Doses Administered	People Vaccinated with at Least One Dose*	People Fully Vaccinated	% of the Population Vaccinated with at Least One Dose
<b>1,105,102</b>	<b>898,160</b>	<b>206,942</b>	<b>10.5%</b>

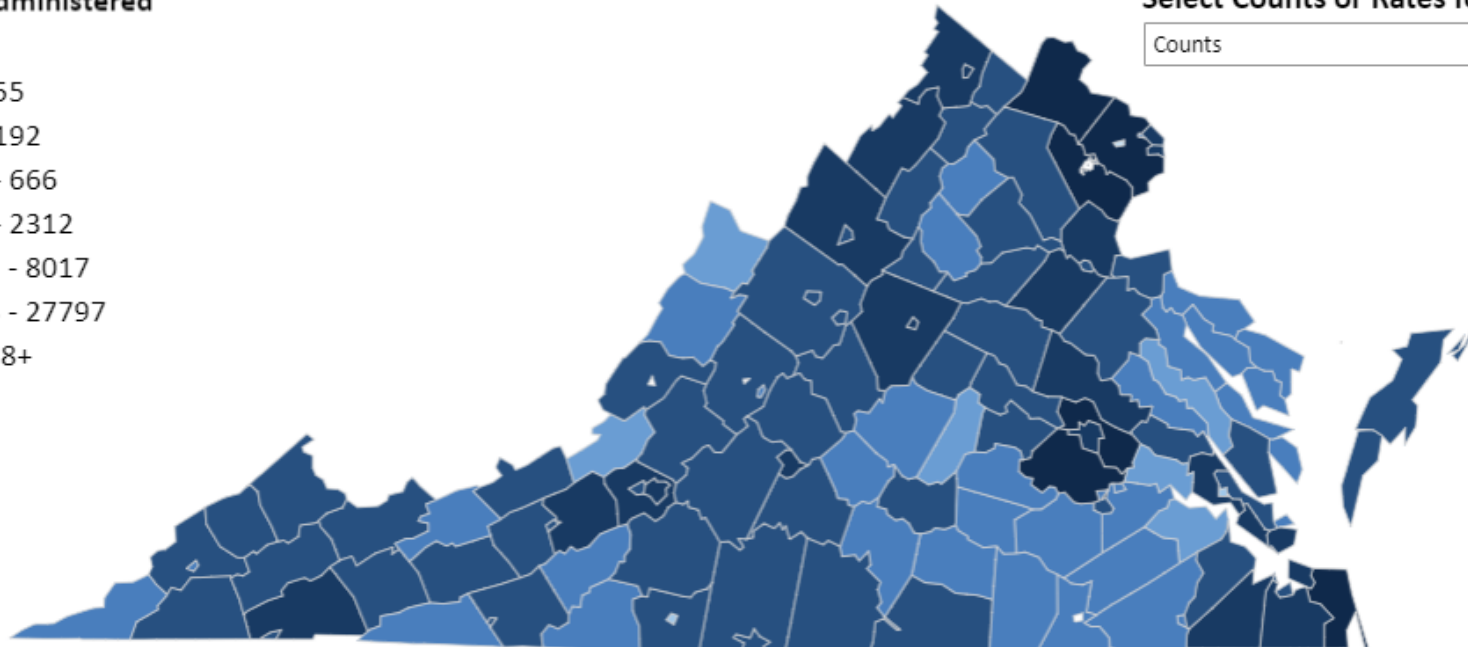
\* Includes people vaccinated with 1 or 2 doses of a 2-dose vaccine, including doses administered through the Federal CDC Pharmacy Partnership for Long Term Care Facilities.

## Vaccine Doses Administered by Locality of Residence

### Doses Administered

- 16 - 55
- 56 - 192
- 193 - 666
- 667 - 2312
- 2313 - 8017
- 8018 - 27797
- 27798+

### Select Counts or Rates for the Map



Doses Not Mapped: 131,001

# PWHD Vaccine Inventory & Clinics

- As of Saturday 2/6 – Pfizer: 8,775 – 100% transferred each week
- As of Saturday 2/6 – Moderna:
  - Total doses received by PWHD: 20,650
  - Total doses administered by PWHD or transferred to partners: 15,090
    - Total doses administered by PWHD on Week of 2/1: 4,061
- **Vaccine Inventory – Week of 2/8:**
  - On-hand as of 2/6: 5,560
  - Shipment Received 2/8: 3,600
  - Starting Inventory 2/8: 9,160
- **PWHD Total Clinic Capacity** week of 2/8 (as of 2/8 4:00 PM): 5,160
  - 1,200 “manual” appointments - Potomac
  - 1,800 VAMS appointments – Potomac
  - 2,160 VAMS appointments - Beacon

# Waitlist and Call Center Updates

- **Waitlist:**

- **Waitlist ID numbers** are not your actual spot in line.
  - Priority group
  - Timestamp of joining list
- Working on a dashboard of data.
- As of 2/8:
  - 48,899 people on 1st dose wait, 1,232 scheduled.
  - 8,839 second doses pre-registered, 423 scheduled.
  - No outstanding 2nd doses until the 11th as of now.

- **Call Center:**

- 2/8 added full Library staffing; over 40 individual call takers online
- Currently booking first doses and 2<sup>nd</sup> doses that are due within the next 7 days



# Long-Term Planning Assumptions

- Long-Term Plan for PWHD Clinics
  - Two large-capacity clinics (East and West)
  - Clinics for week of 2/15 currently being finalized
- CVS
  - One location in PWC – Gainesville
  - Federal allocation, not Health District allocation
  - Prioritization is 65 and over; Separate registration opens 2/9
- Continuing partnership with Safeway at Veterans Park
  - Booking from PWHD waitlist only
- “Manual” booking procedures stable for PWHD waitlist

# What can the Community Do?

- **Vaccine is only one tool in the fight against COVID-19**
  - It will take **months** for the current priority groups to be accommodated at the current rate of vaccine supply.
  - “Open” POD’s (without an appointment) are not possible until additional vaccine candidates receive Emergency Use Authorization from the U.S. Food and Drug Administration
- Continue to follow mitigation measures:
  - Wash your hands
  - Wear a mask
  - Watch your distance
  - Avoid large gatherings and crowded places
  - Telework when able
- Medical Reserve Corps (MRC)
  - <https://www.vdh.virginia.gov/princewilliammrc/>
  - Clinical and non-clinical options

# Questions

