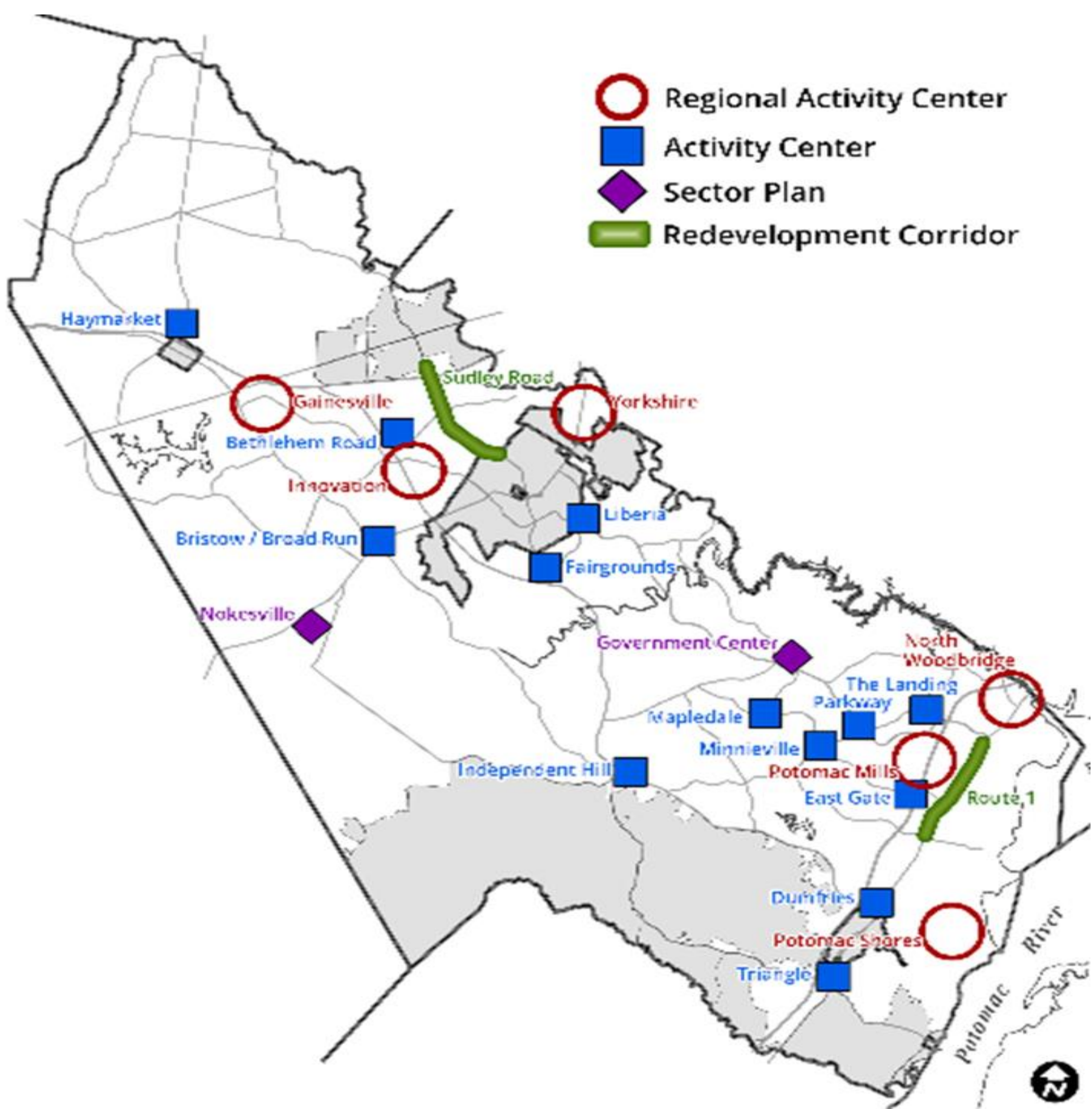




Comprehensive Plan Update

Land Use

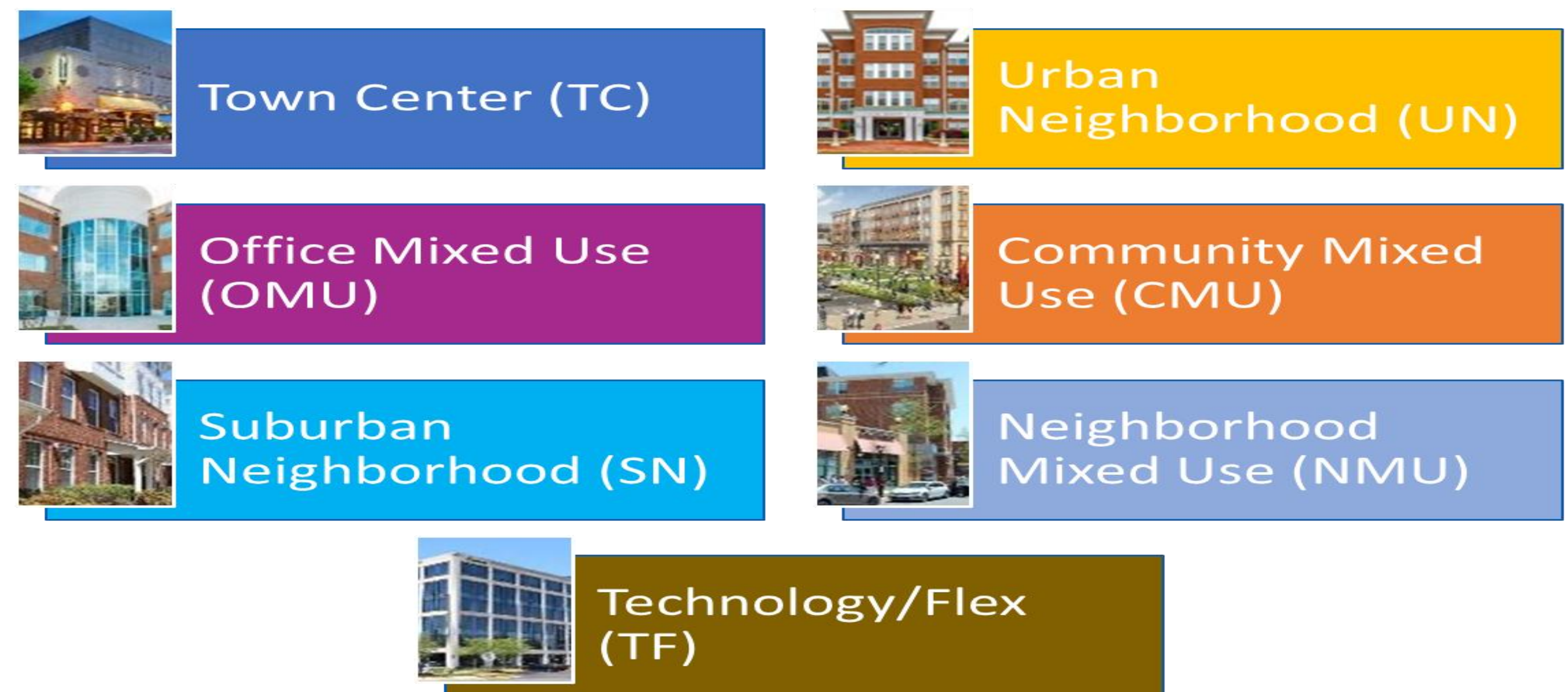


Regional Activity Centers are the locations that will accommodate most of the future growth and play a central role in achieving the Region Forward Vision's prosperity, sustainability, accessibility, and livability goals.

Local Activity Centers are the locations that serve particular areas within the county such as nodes within a Small Area Plans. These areas will provide supplemental future growth while playing a major role in achieving the goals of associated with the Smart Growth Principles.

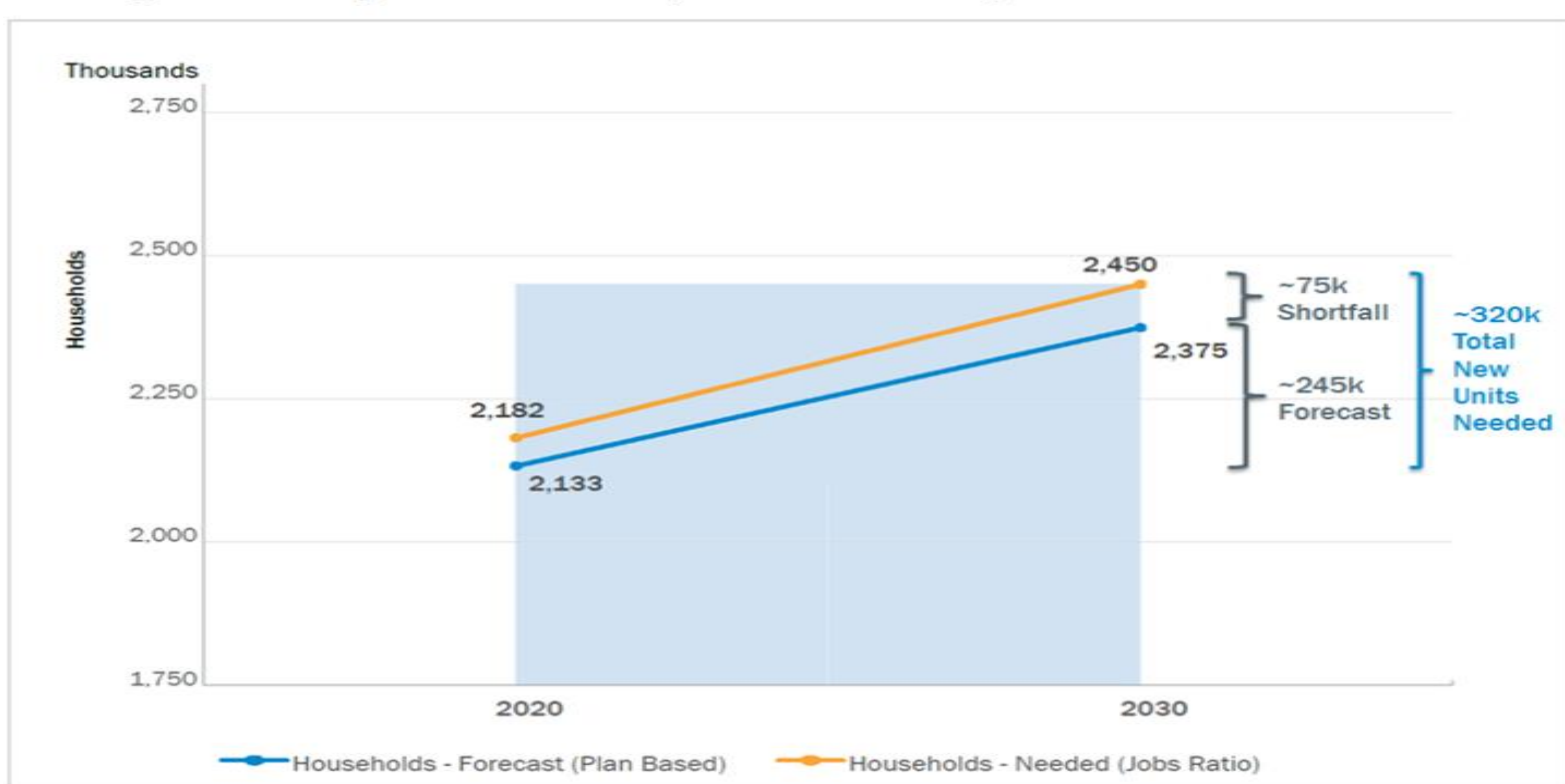
Redevelopment Corridors are geographic areas consisting of older commercial neighborhoods which aren't experiencing their full economic potential and identified as a priority for planning and investment strategies that serve as a catalyst to promote and perpetuate economic viability.

New Suite of Land Use Classifications



Housing

COG Regional Housing Need 2020-2030 (Planned vs. Needed)



Source: COG Cooperative Forecasts

Regional Housing Targets

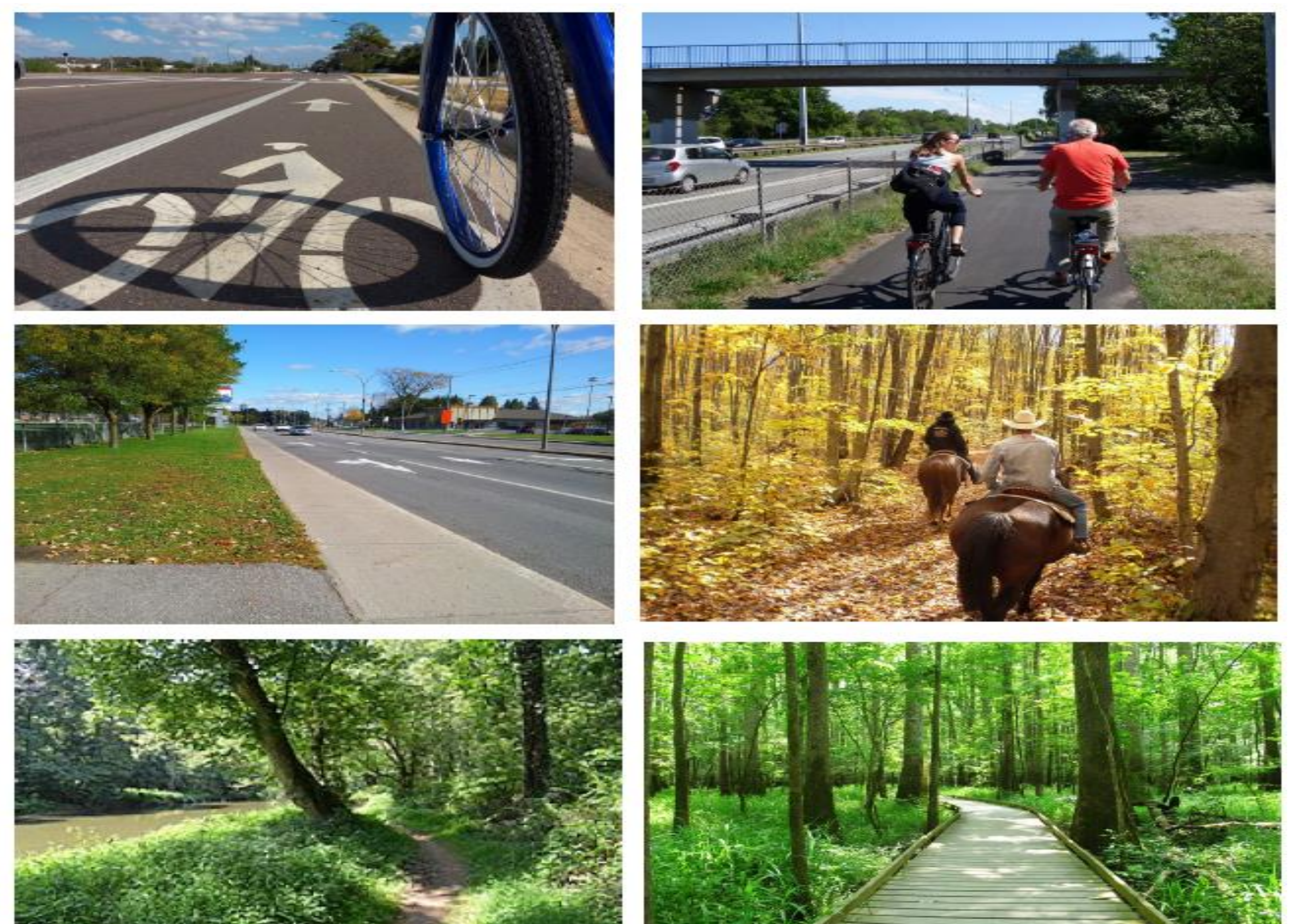
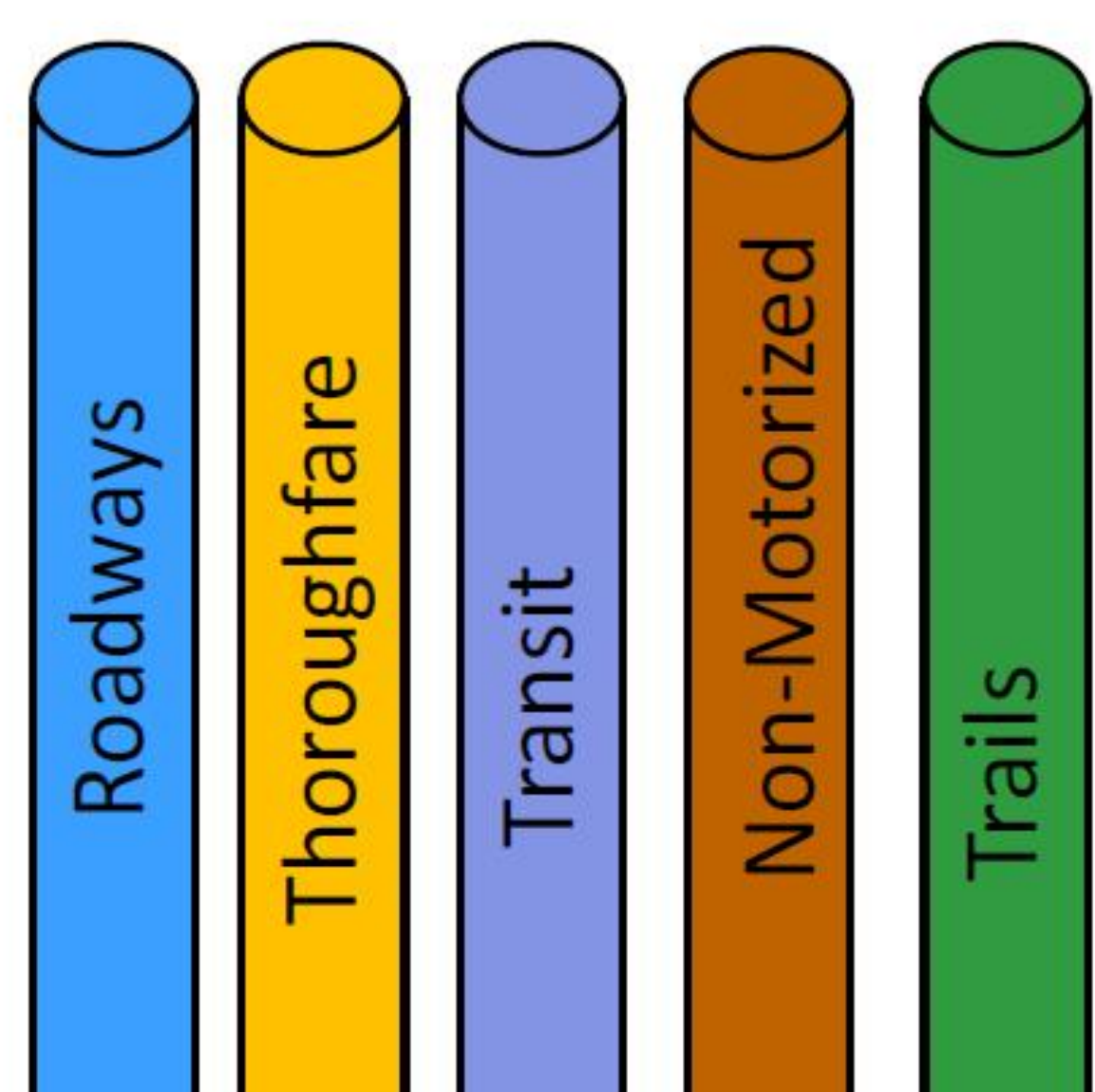
- Regional Target 1: AMOUNT**
At least 320,000 housing units should be added in the region between 2020 and 2030. This is an additional 75,000 units beyond the units already forecast for this period.
- Regional Target 2: ACCESSIBILITY**
At least 75% of all new housing should be in Activity Centers or near high-capacity transit.
- Regional Target 3: AFFORDABILITY**
At least 75% of new housing should be affordable to low- and middle-income households.



Mobility

Mobility Chapter Moving Forward

Elements of the current plan cover the following Sectors (Silos)



Community Meeting



The Planning Office will be hosting an in-person community meeting on the Pathway to 2040 Comprehensive Plan Update on Thursday, February 10, 2022, at the [Beacon Hall Conference Center](#) on the [George Mason University SciTech Campus](#) in Manassas. Visit the Comprehensive Plan Update web portal at the following link: <https://www.pwcva.gov/departments/planning-office/pathway-to-2040>