

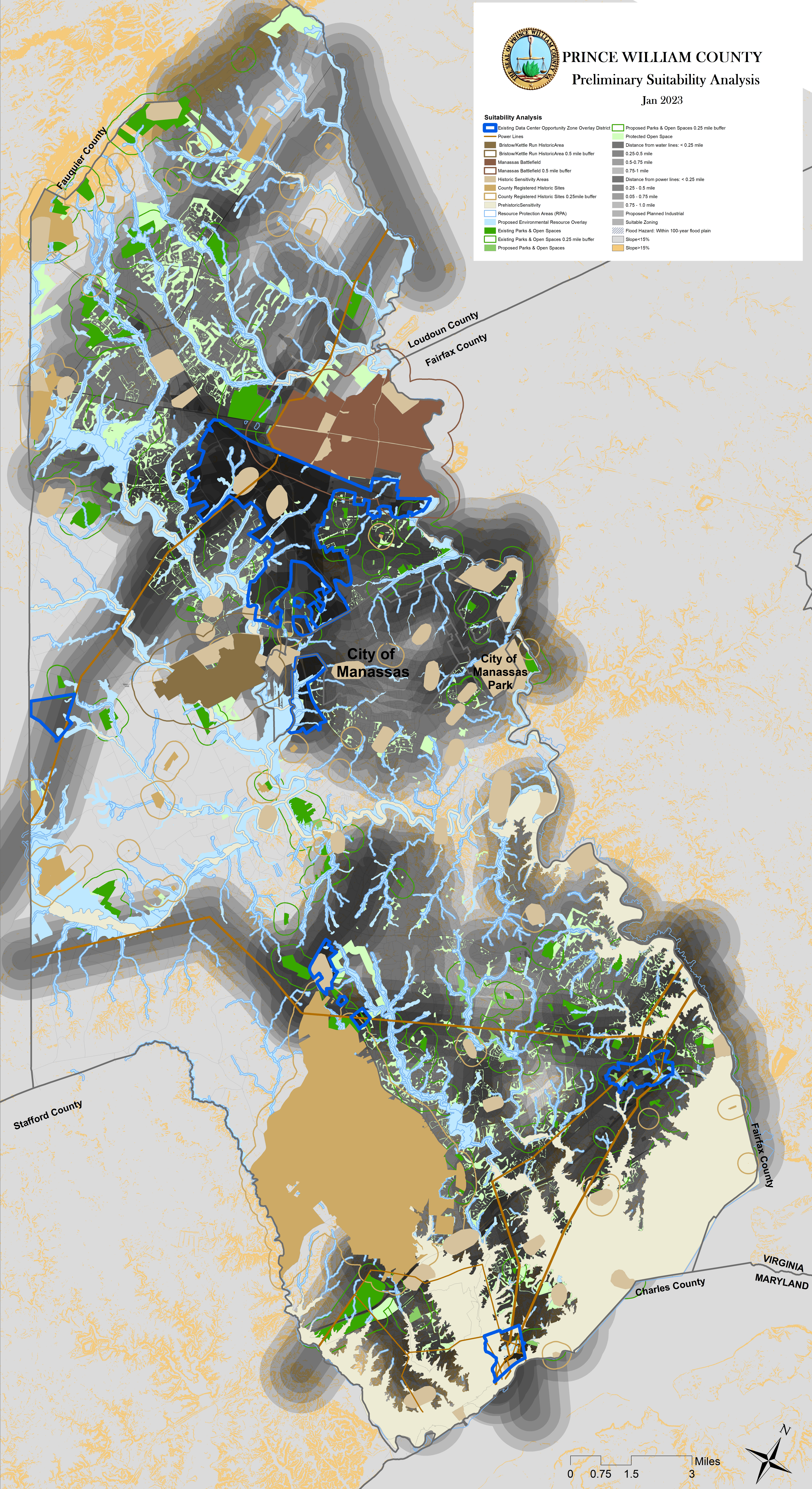


# PRINCE WILLIAM COUNTY Preliminary Suitability Analysis

Jan 2023

### Suitability Analysis

- Existing Data Center Opportunity Zone Overlay District
- Power Lines
- Bristow/Kettle Run Historic Area
- Bristow/Kettle Run Historic Area 0.5 mile buffer
- Manassas Battlefield
- Manassas Battlefield 0.5 mile buffer
- Historic Sensitivity Areas
- County Registered Historic Sites
- County Registered Historic Sites 0.25 mile buffer
- Prehistoric Sensitivity
- Resource Protection Areas (RPA)
- Proposed Environmental Resource Overlay
- Existing Parks & Open Spaces
- Existing Parks & Open Spaces 0.25 mile buffer
- Proposed Parks & Open Spaces
- Proposed Parks & Open Spaces 0.25 mile buffer
- Protected Open Space
- Distance from water lines: < 0.25 mile
- 0.25 - 0.5 mile
- 0.5 - 0.75 mile
- 0.75 - 1 mile
- Distance from power lines: < 0.25 mile
- 0.25 - 0.5 mile
- 0.5 - 0.75 mile
- 0.75 - 1.0 mile
- Proposed Planned Industrial
- Suitable Zoning
- Flood Hazard: Within 100-year flood plain
- Slope < 15%
- Slope > 15%



City of Manassas

City of Manassas Park

Stafford County

Loudoun County  
Fairfax County

Charles County

Fairfax County

VIRGINIA  
MARYLAND

