



Ellis L. Barron Park Park Master Plan

September 29, 2022

Hosted by:

Supervisor Pete Candland

and

Prince William County

Department of Parks, Recreation & Tourism

AGENDA

- Opening Remarks & Welcome
Supervisor Pete Candland
- Park Master Plan Overview
Patti Pakkala, Planner, DPRT
- Questions/Comments/Feedback
- Wrap-up & Next Steps

Ellis L. Barron Park

Neighborhood Park

15.26 acres

Acquired 1981

Current Inventory:

Large open play field

2 basketball courts

2 picnic pavilions

1 playground (ages 2-12)

2 tennis courts

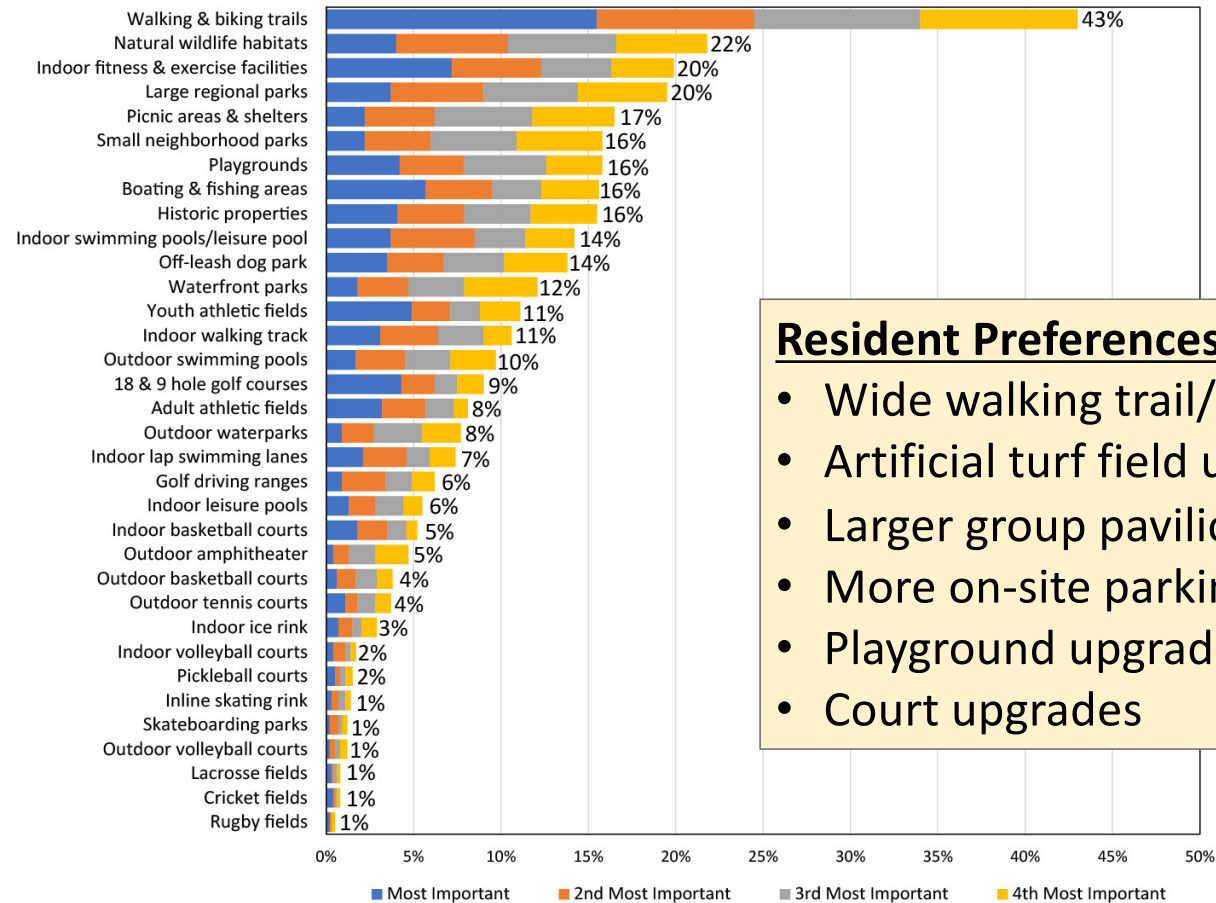
1 sand volleyball court



DPRT Needs Assessment

Q5. Facilities That Are Most Important to Respondent Households

by percentage of respondents who selected the items as one of their top four choices



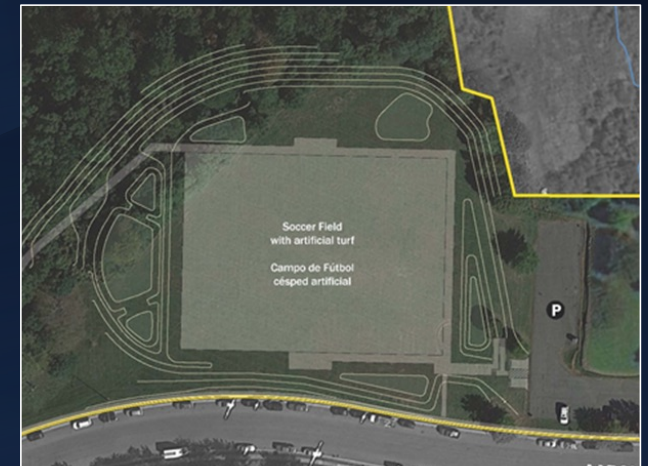
Resident Preferences from April

- Wide walking trail/fitness loop
- Artificial turf field upgrades
- Larger group pavilion
- More on-site parking
- Playground upgrades
- Court upgrades



Blackburn Development Rezoning - Proffer

- 1 artificial turf field not to exceed 225' x 360'
- Design & permitting for field and associated parking
- Grading and earthwork
- Storm water improvements for field
- An expanded parking area
- A perimeter security fence
- Monetary contribution of approximately \$1.6 million for field construction



Recent ARPA Funding

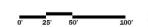
- \$450,000 for improvements
- Directed at investment in critical infrastructure
- Must avoid creating new programs or add-ons to existing programs that require an ongoing financial commitment
- Applicable to accessibility improvements, court upgrades, expanded parking, picnic shelter enhancements



Ellis L. Barron Neighborhood Park Master Plan (2022)

Legend

- | | |
|----------------------------------|--|
| 01 Main Entrance with bike racks | 09 Maintenance Shed |
| 02 Pavilions (2) with grills | 10 Outer Loop Path |
| 03 Multi-court (see options) | 11 Bioretention areas |
| 04 Pumptrack for under 10 y.o. | 12 Parking - New (30 spaces) |
| 05 Playground | 13 Parking - Existing (2 ADA spaces added) |
| 06 Basketball Courts (2) | 14 Restroom Pre-fabricated |
| 07 Artificial Turf Field | 15 ADA Port-A-Johns (2) |
| 08 Small Pavilions (2) | |



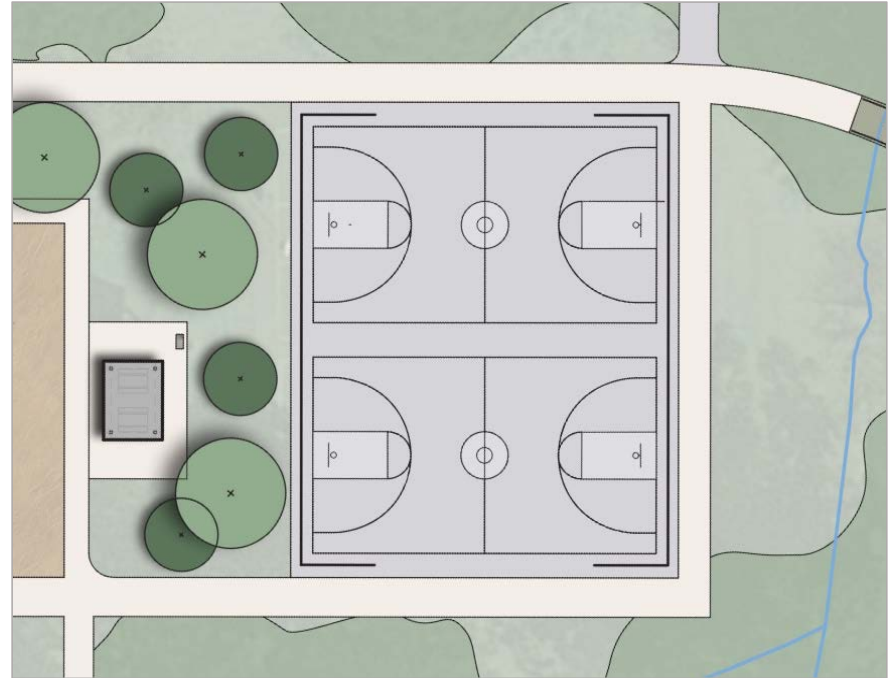
Ellis L. Barron Park Field Upgrades

- Regrade current field area from diamond to U10 rectangular field
- Install accessible parking spaces
- Create accessible walkways and seating areas; provide trail connection to other side of park
- Extend sidewalk along Aaron Lane
- Finalize design within available proffer budget



Ellis L. Barron Park Basketball Court Upgrades

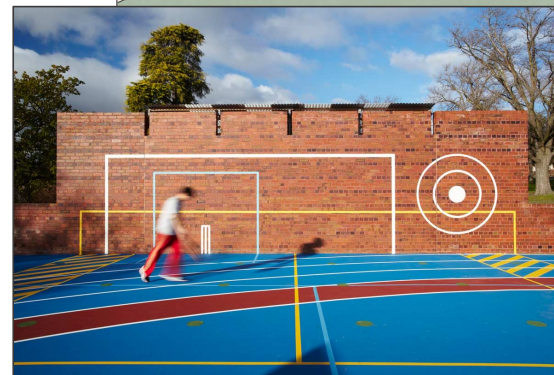
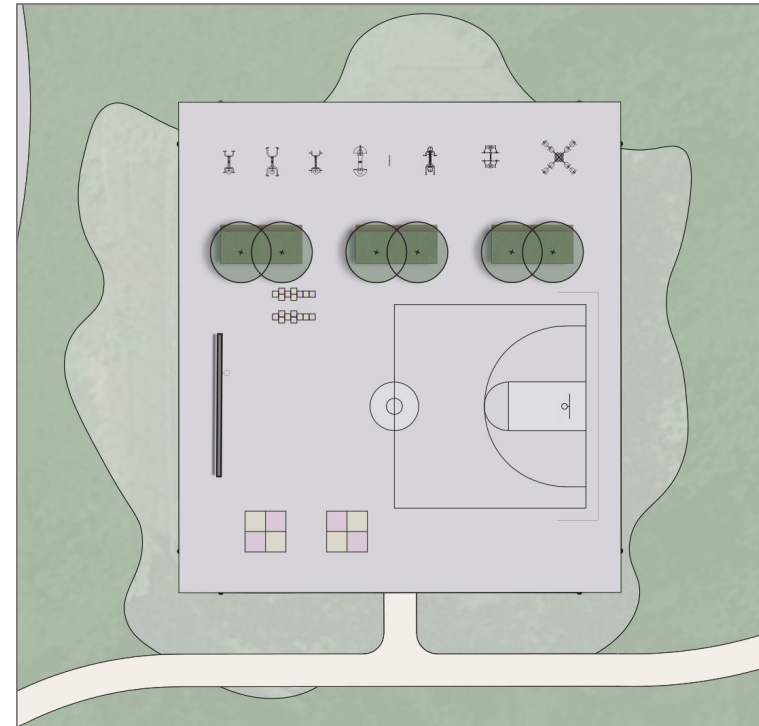
- Repave/resurface
- Install new goal posts
- Install fencing
- Upgrade lighting for nighttime use
- Appropriate project for ARPA funding



Ellis L. Barron Park

Tennis Court Upgrade – Option 1

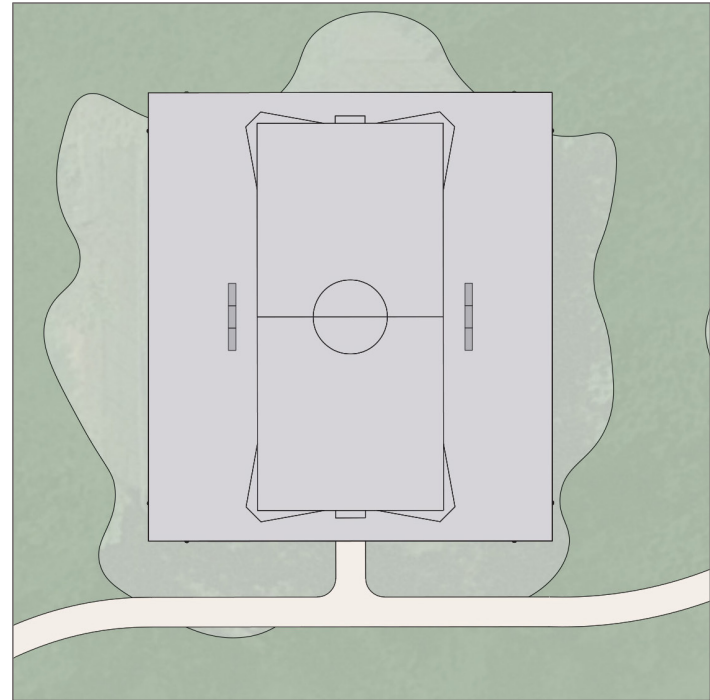
- Repave/resurface
- Install multi-purpose features like half court, activity wall, fitness stations
- Full or partial fencing and seating areas; evaluate options for nighttime lighting
- Appropriate project for ARPA funding



Ellis L. Barron Park

Tennis Court Upgrade – Option 2

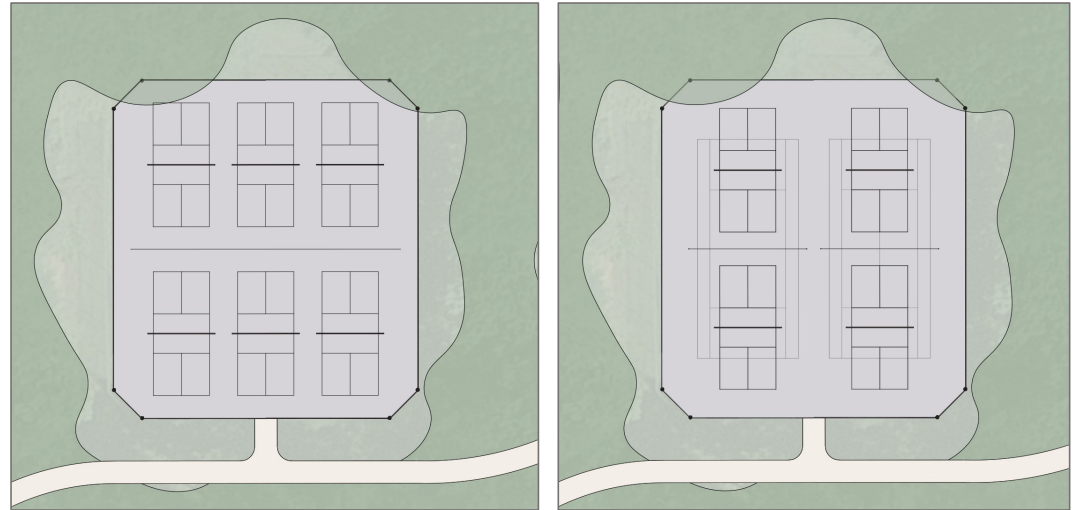
- Repave/resurface
- Install boarded mini pitch/futsal court
- Option to reduce pad size or include fitness stations; evaluate options for nighttime lighting
- Appropriate project for ARPA funding



Ellis L. Barron Park

Tennis Court Upgrade – Option 3

- Repave/resurface
- Install tennis and/or pickleball courts
- Install new fencing
- Evaluate options for nighttime lighting
- Appropriate project for ARPA funding



Ellis L. Barron Park

Playground Area Improvements

- Renovate playground with new features
- Upgrade existing picnic shelters and add plantings for shade
- Optional pump track facility
- Restroom facility as funds allow
- Playground and picnic shelters appropriate for ARPA funding



Ellis L. Barron Park Trail Improvements

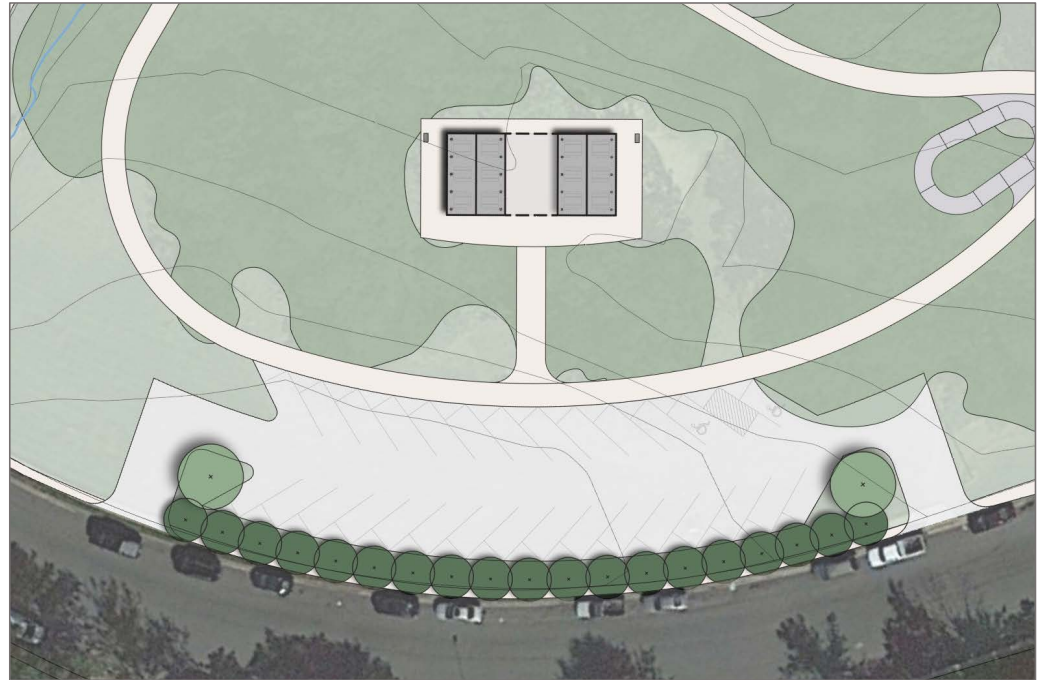
- Formalize and organize existing social trails
- Create wide exercise/fitness loop trail with access to Ashton Ave.
- Consider lights for nighttime safety and security
- Formalizing existing pathways appropriate for ARPA funding



Ellis L. Barron Park

Expanded Picnic Shelter(s) and On-site Parking

- Remove sand volleyball court
- Create larger group picnic space
- Add additional on-site parking
- Create accessible connections between on-site parking and park amenities



PRIORITIES

- ✓ Field Upgrades
- ✓ Court Upgrades
- ✓ Playground/Picnic
- ✓ Fitness Loop Trail
- ✓ On-site Parking
- ✓ Additional Picnic
- ✓ Pump Track
- ✓ Restrooms



SUGGESTIONS?
PRIORITIES?



GREAT IDEAS?

Next Steps:

Finalize priorities.

PRC Review and BOCS approval.

Please provide feedback to:

Supervisor Pete Candland



gainesville@pwcgov.org

Department of Parks, Recreation & Tourism



dprtmasterplan@pwcgov.org

Information and updates available at:

<https://www.pwcva.gov/department/parks-recreation-tourism/parks-master-planning>

**THANK YOU
FOR YOUR PARTICIPATION**