

Loudoun County
Fauquier County



PRINCE WILLIAM COUNTY Long-Range Land Use Map

Published January 1, 2024

Long-Range Land Use Classifications

Rural Communities

- Agriculture and Forestry [AF]
- Conservation Residential [CRes-1B]
- Conservation Residential [CRes-1C]
- Mixed Use (Hamlet) [MU-1] (T-1B)
- Mixed Use (Village) [MU-2] (T-1C)

Transitional Areas

- Residential Neighborhood [RN-1]

Suburban Communities

- Commercial (Neighborhood) [COM-2]
- Commercial (Community) [COM-3]
- Industrial (Light) [I-2]
- Industrial (Tech/Flex) [I-3]
- Mixed Use (Neighborhood) [MU-3]
- Office Mixed Use (Low-Rise) [OMU-2]
- Office Mixed Use (Mid-Rise) [OMU-3]
- Residential Neighborhood [RN-2]
- Residential Neighborhood [RN-3]
- Residential Planned Community [RPC] Name

Urban Communities

- Industrial (Heavy) [I-4]
- Mixed Use (Community) [MU-4]
- Mixed Use (Town Center) [MU-5]
- Mixed Use (Urban Town Center) [MU-6]
- Office Mixed Use (High-Rise) [OMU-4]
- Residential Neighborhood [RN-4]
- Residential Neighborhood [RN-5]

Civic and Other Uses

- County Registered Historic Site [CRHS]
- Marine Corps Base Quantico [MCBQ]
- Occoquan Reservoir Protection Area [ORPA]
- Open Water [OW]
- Parks and Open Space [POS]
- Public Land [PL]
- Public Right-of-Way

Rural Placetypes

- Hamlet Name
- Village Name

Multimodal Centers and Districts

- Activity Center Name
- Redevelopment Corridor Name
- Small Area Plan Name
- Small Area Plan Subdistrict

Special Planning Areas

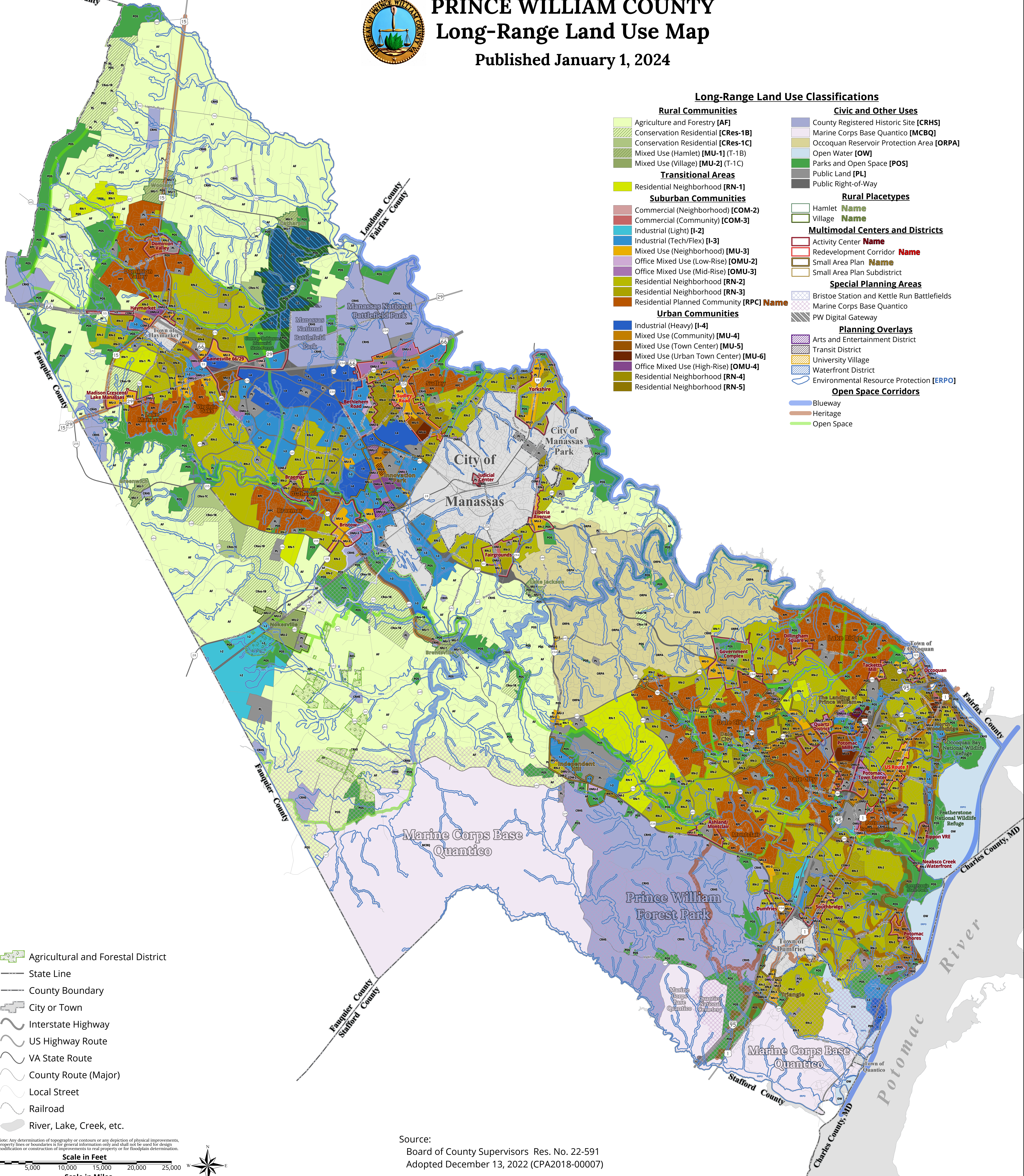
- Bristow Station and Kettle Run Battlefields
- Marine Corps Base Quantico
- PW Digital Gateway

Planning Overlays

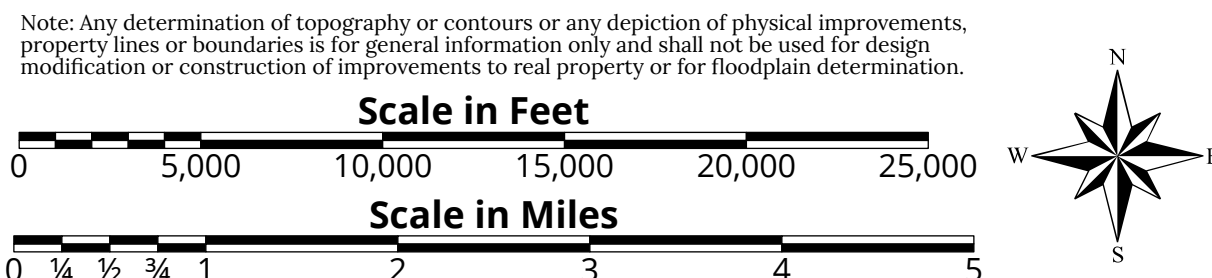
- Arts and Entertainment District
- Transit District
- University Village
- Waterfront District
- Environmental Resource Protection [ERPO]

Open Space Corridors

- Blueway
- Heritage
- Open Space



- Agricultural and Forestal District
- State Line
- County Boundary
- City or Town
- Interstate Highway
- US Highway Route
- VA State Route
- County Route (Major)
- Local Street
- Railroad
- River, Lake, Creek, etc.



Source:
Board of County Supervisors Res. No. 22-591
Adopted December 13, 2022 (CPA2018-00007)

- Slivers under 1,000 square feet will be adjusted administratively.
- This map cannot be interpreted separately from the Comprehensive Plan Text.
Go to www.pwcva.gov/planning for more information.