

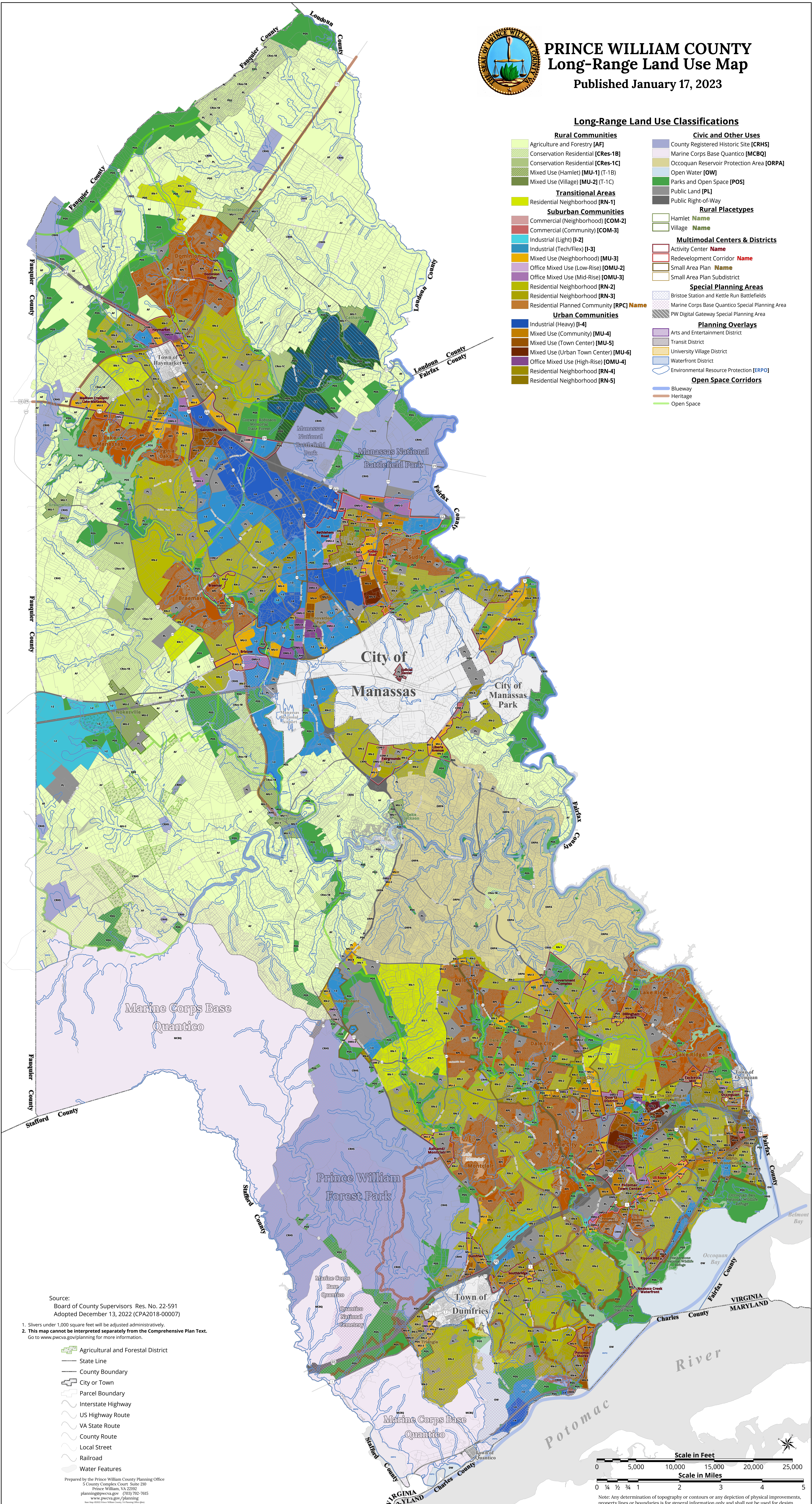


PRINCE WILLIAM COUNTY Long-Range Land Use Map

Published January 17, 2023

Long-Range Land Use Classifications

- | | |
|---|--|
| Agriculture and Forestry [AF] | Civic and Other Uses |
| Conservation Residential [CRS-1B] | County Registered Historic Site [CRHS] |
| Conservation Residential [CRS-1C] | Marine Corps Base Quantico [MCBQ] |
| Mixed Use (Hamlet) [MU-1] (T-1B) | Occoquan Reservoir Protection Area [ORPA] |
| Mixed Use (Village) [MU-2] (T-1C) | Open Water [OW] |
| Residential Neighborhood [RN-1] | Parks and Open Space [POS] |
| Public Right-of-Way | Public Land [PL] |
| Transitional Areas | Public Right-of-Way |
| Suburban Communities | Rural Placetypes |
| Commercial (Neighborhood) [COM-2] | Hamlet Name |
| Commercial (Community) [COM-3] | Village Name |
| Industrial (Light) [I-2] | Multimodal Centers & Districts |
| Industrial (Tech/Flex) [I-3] | Activity Center Name |
| Mixed Use (Neighborhood) [MU-3] | Redevelopment Corridor Name |
| Office Mixed Use (Low-Rise) [OMU-2] | Small Area Plan Name |
| Office Mixed Use (Mid-Rise) [OMU-3] | Small Area Plan Subdistrict |
| Residential Neighborhood [RN-2] | Special Planning Areas |
| Residential Neighborhood [RN-3] | Bristoe Station and Kettle Run Battlefields |
| Residential Planned Community [RPC] Name | Marine Corps Base Quantico Special Planning Area |
| Residential Planned Community [RPC] Name | PW Digital Gateway Special Planning Area |
| Urban Communities | Planning Overlays |
| Industrial (Heavy) [I-4] | Arts and Entertainment District |
| Mixed Use (Community) [MU-4] | Transit District |
| Mixed Use (Town Center) [MU-5] | University Village District |
| Mixed Use (Urban Town Center) [MU-6] | Waterfront District |
| Office Mixed Use (High-Rise) [OMU-4] | Environmental Resource Protection [ERPO] |
| Residential Neighborhood [RN-4] | Open Space Corridors |
| Residential Neighborhood [RN-5] | Blueway |
| | Heritage |
| | Open Space |



Source:
Board of County Supervisors Res. No. 22-591
Adopted December 13, 2022 (CPA2018-00007)

1. Slivers under 1,000 square feet will be adjusted administratively.
2. This map cannot be interpreted separately from the Comprehensive Plan Text.
Go to www.pwcvva.gov/planning for more information.

- Agricultural and Forestal District
- State Line
- County Boundary
- City or Town
- Parcel Boundary
- Interstate Highway
- US Highway Route
- VA State Route
- County Route
- Local Street
- Railroad
- Water Features

Prepared by the Prince William County Planning Office
5 County Complex Court, Suite 210
Prince William, VA 22192
planning@pwcvva.gov (703) 792-7615
www.pwcvva.gov/planning
Map Date: 02/22/2023
Technical Date: February 15, 2023, April 20, 2023 (2023)



Note: Any determination of topography or contours or any depiction of physical improvements, property lines or boundaries is for general information only and shall not be used for design modification or construction of improvements to real property or for floodplain determination.