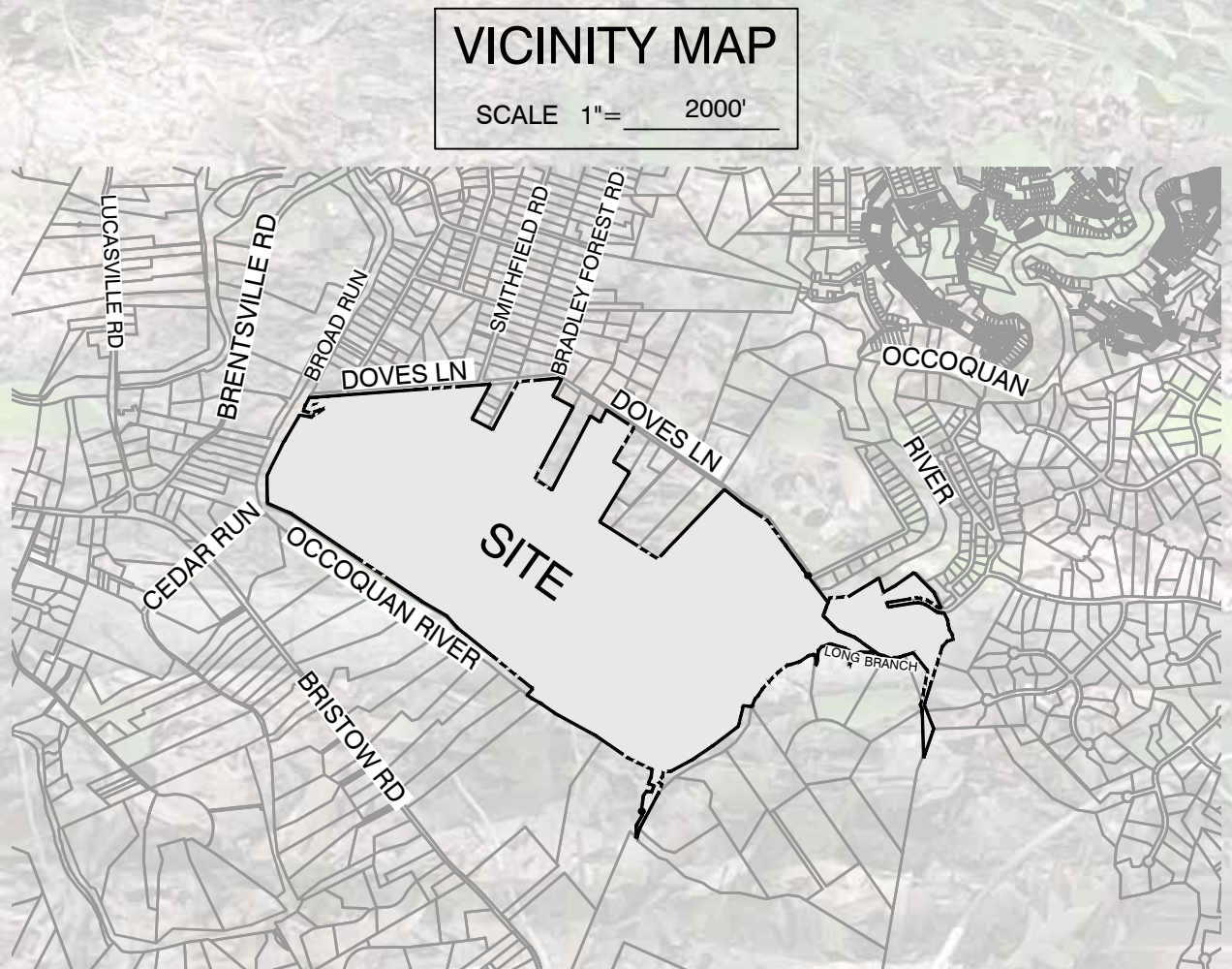
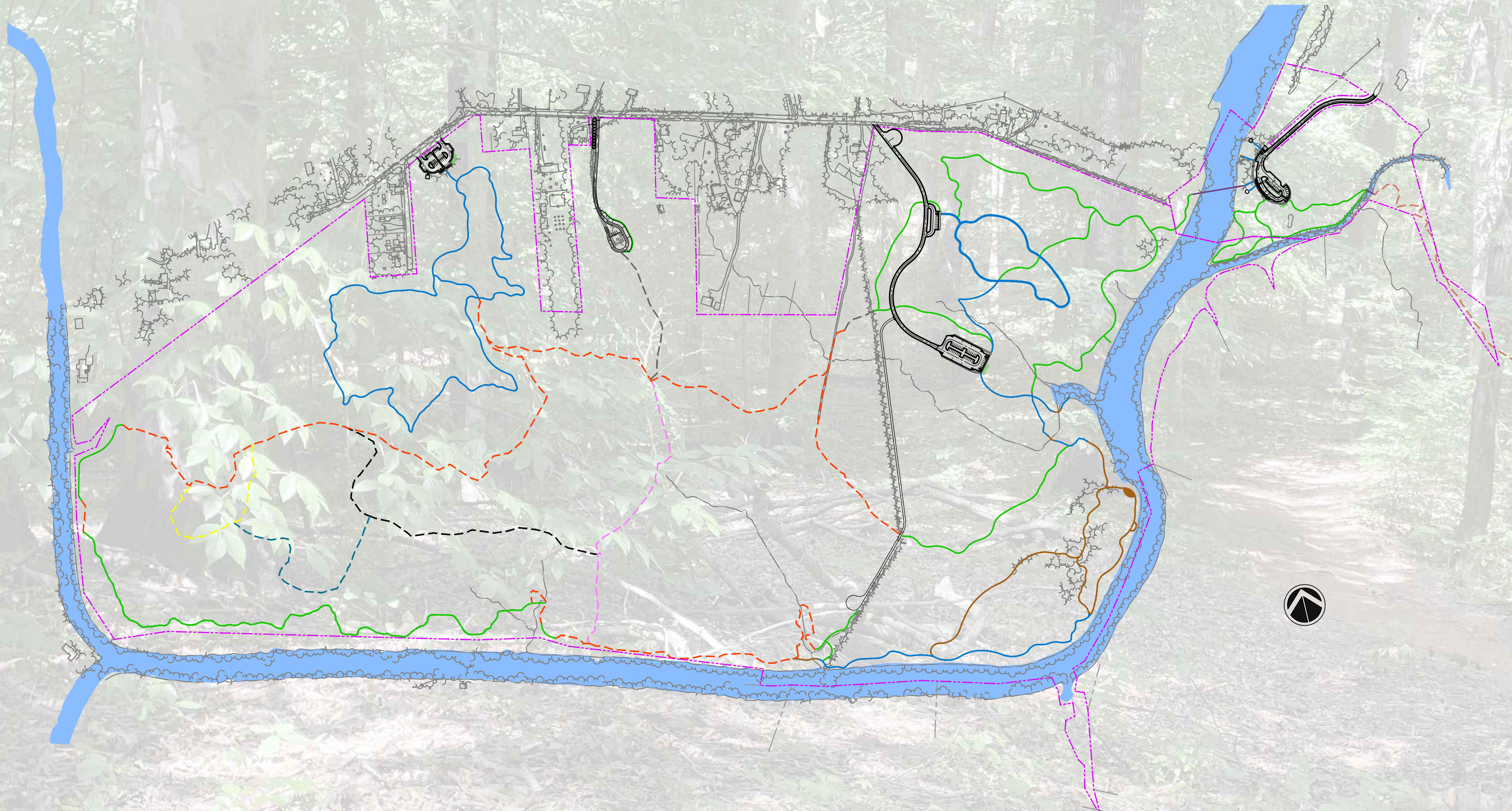


DOVES LANDING PARK

PRELIMINARY SITE PLAN REVISION



SHEET INDEX

01.....	COVER SHEET
02.....	LEGEND & DETAILS
03.....	LEGEND, DETAILS & SHEET KEY
04.....	MASTER PLAN
05.....	WEST ADA TRAIL PLAN
06.....	WEST PARKING LOT PLAN
07.....	HORSE TRAILER PARKING LOT
08.....	EAST PARK ENTRANCE PLAN
09.....	EAST ADA TRAIL PLAN
10.....	TRAILHEAD PARKING LOT PLAN
11.....	WETLAND TRAIL PLAN
12.....	EAST PARKING LOT PLAN
13.....	SAFETY ACCESS PLAN
14.....	SINCLAIR MILL TRAILS PLAN
15.....	SINCLAIR MILL PARKING LOT PLAN

DOVES LANDING PARK

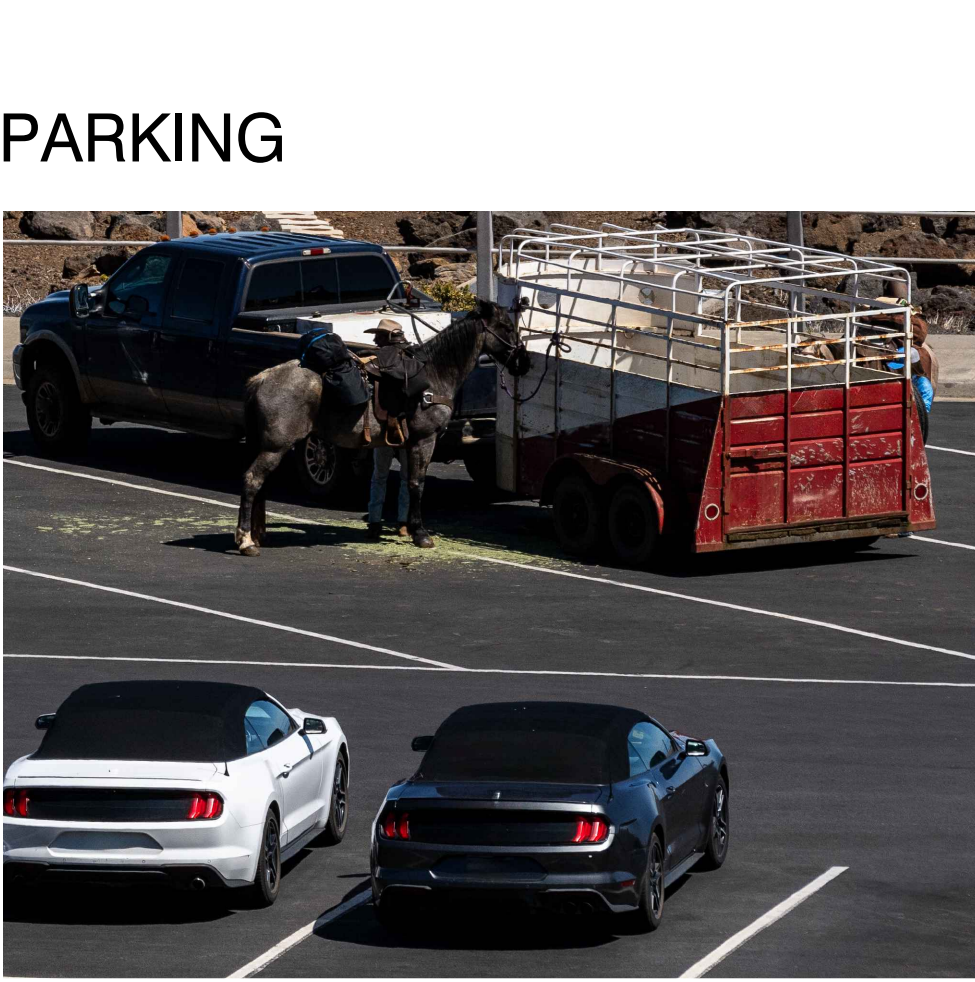
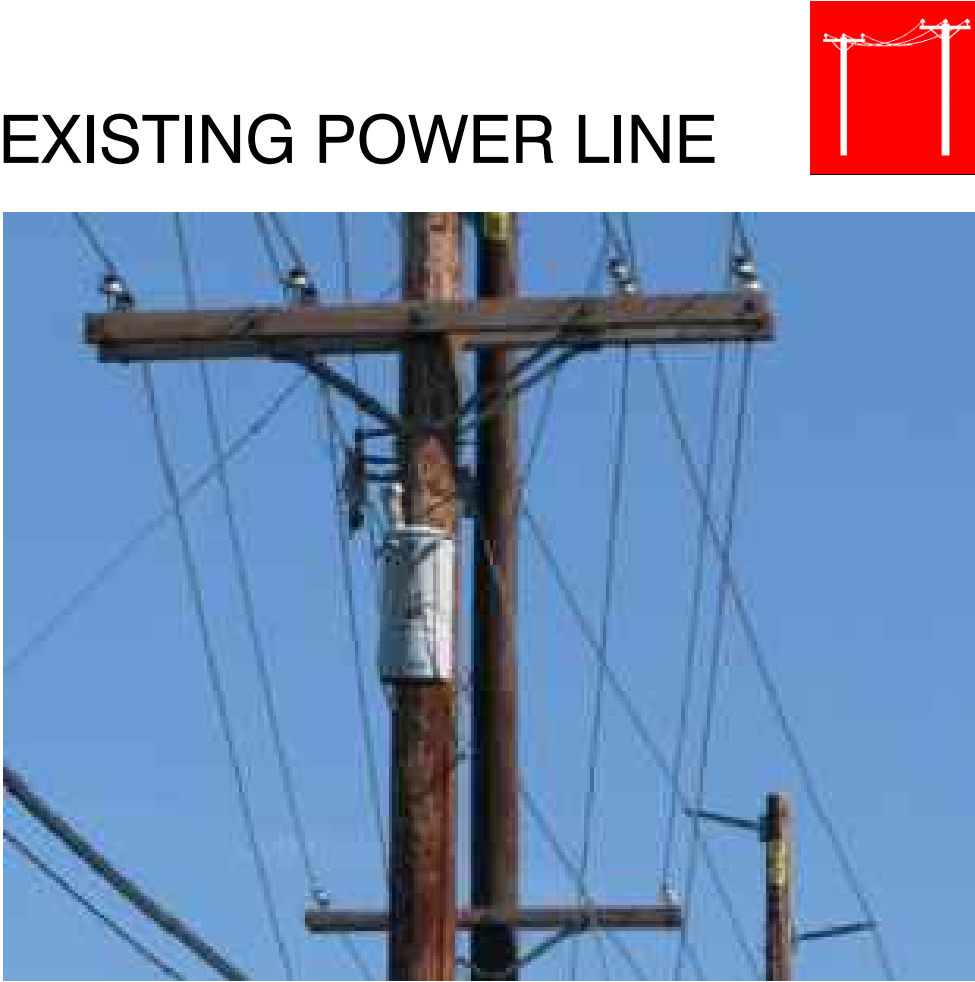
COVER SHEET

DATE: 05/19/2024

Dewberry
Engineers Inc.
13575 HEATHCOTE BLVD.
SUITE 150
GAINESVILLE, VA 20155-6693
PHONE: 703.468.2211
FAX: 703.468.2212

Q:\50189524\50182170-Doves Landing Park\CAD\Civil\ENGR\Drawings\04-25-25 - May 2025 Meeting Layouts\Submitt\01-Cover Sheet.dwg May 19, 2025 - 12:54pm

LEGEND:



DOVES LANDING PARK
LEGEND & DETAILS

DATE: 05/19/2024

SHEET 02 OF 15

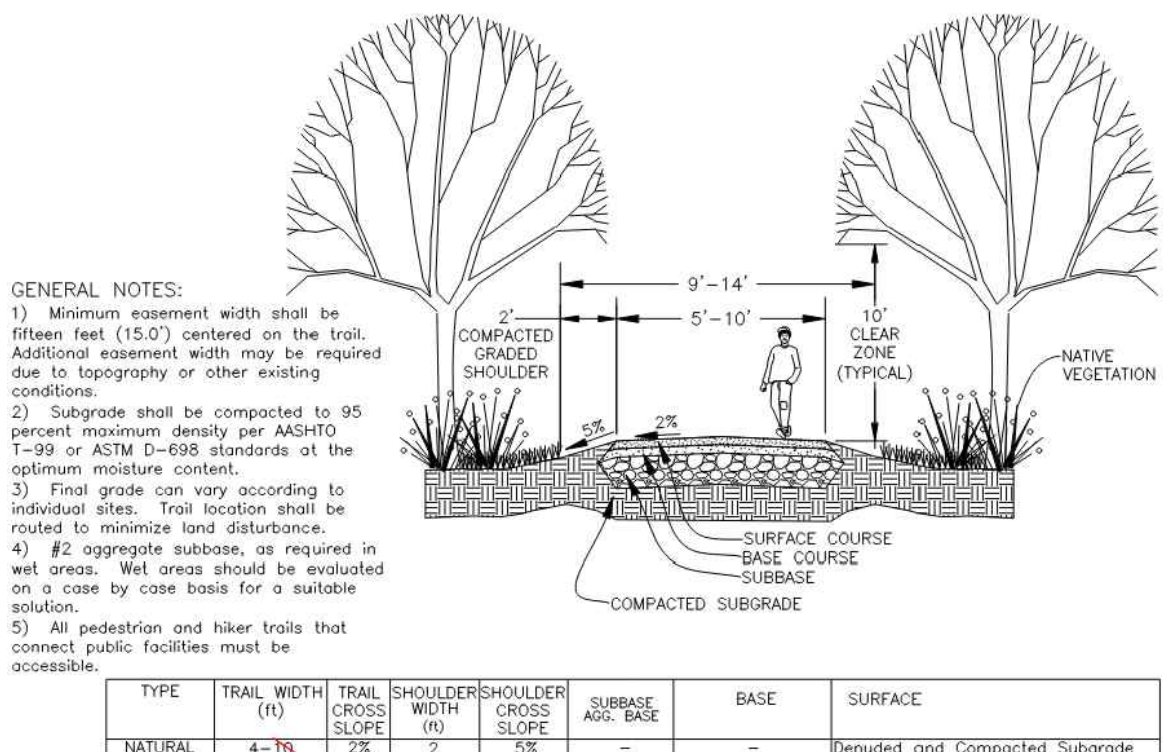
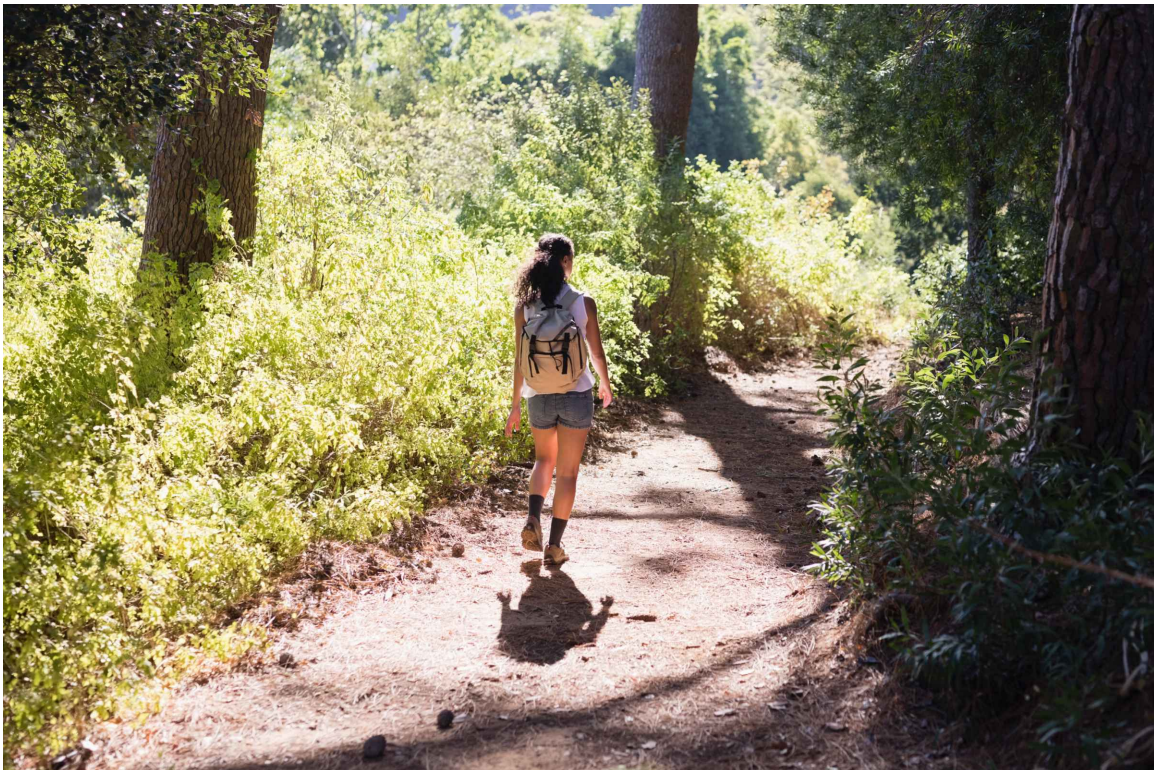
Dewberry
Dewberry
Engineers Inc.
13575 HEATHCOTE BLVD.
SUITE 150
GAINESVILLE, VA 20155-6693
PHONE: 703.468.2211
FAX: 703.468.2212

Q:\50169524\50182170-Doves Landing Park\CAD\Civil\ENGR\Doves Landing 35% Design\Exhibits\04-25-25 - May 2025 Meeting Layouts\Submit\02-LEGEND AND DETAILS.dwg, May 19, 2025 - 12:54pm

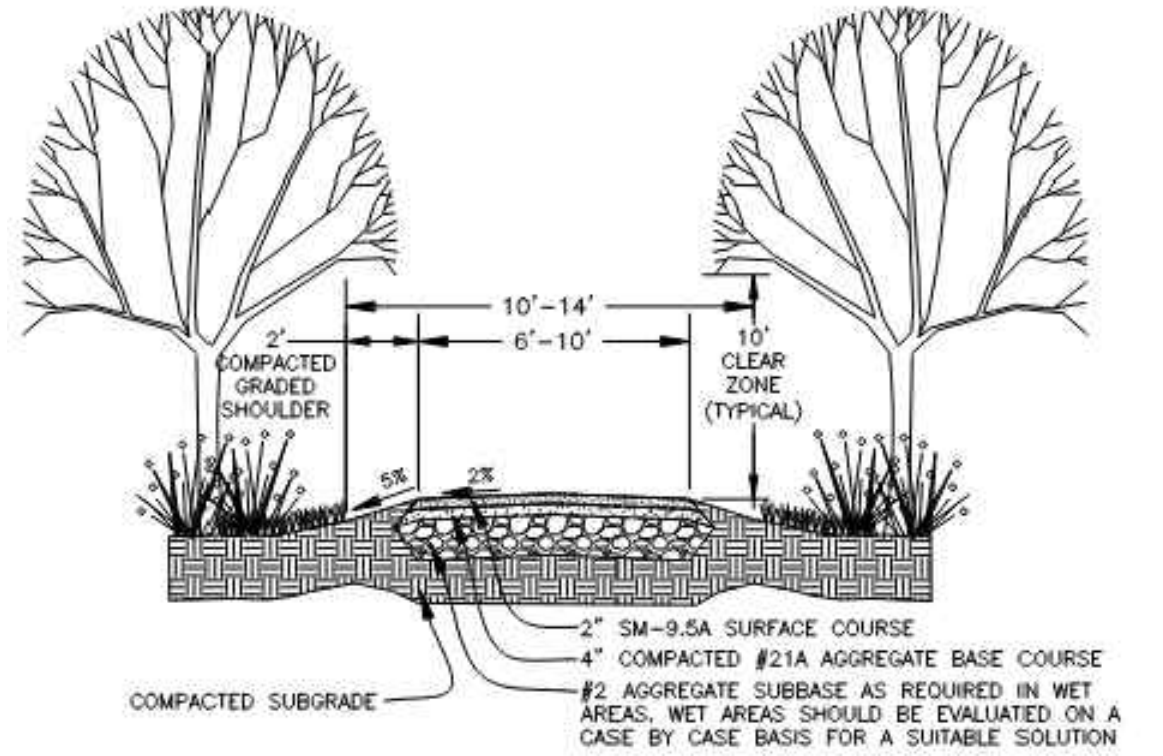
Q:\50189524\50182170--Doves Landing_Park\CAD\Civil\ENGR\Landing_35% Design\Exhibits\04-25-25 - May 2025 Meeting Layouts\Submit\03-LEGEND, DETAILS & SHEET KEY.dwg May 19, 2025 - 12:54pm

LEGEND:

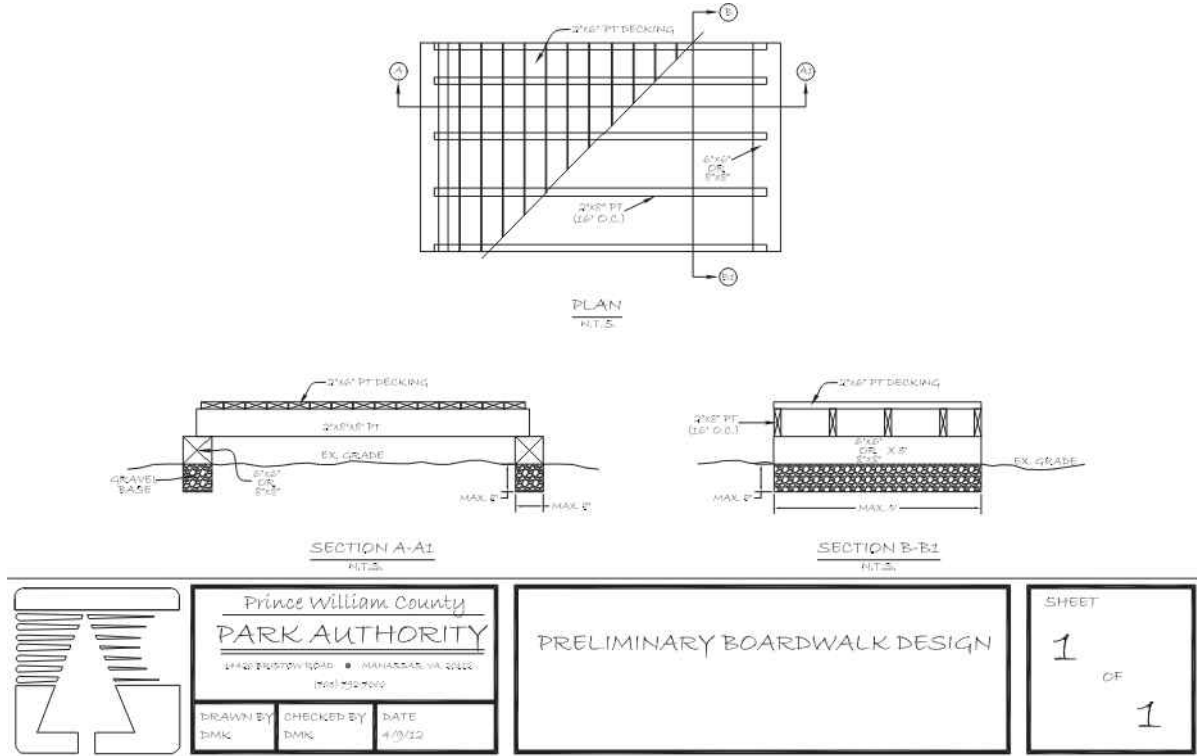
TRAIL
(NATURAL MATERIAL)



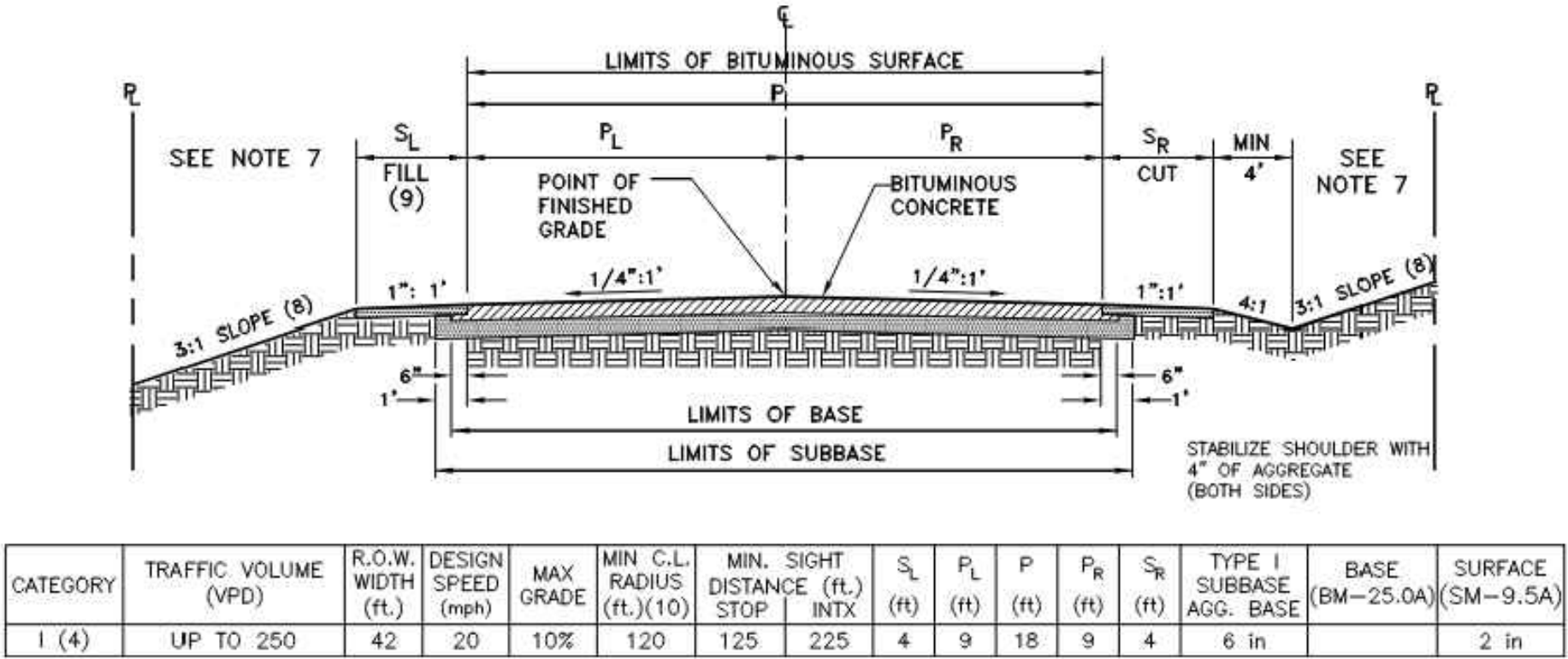
ADA TRAIL



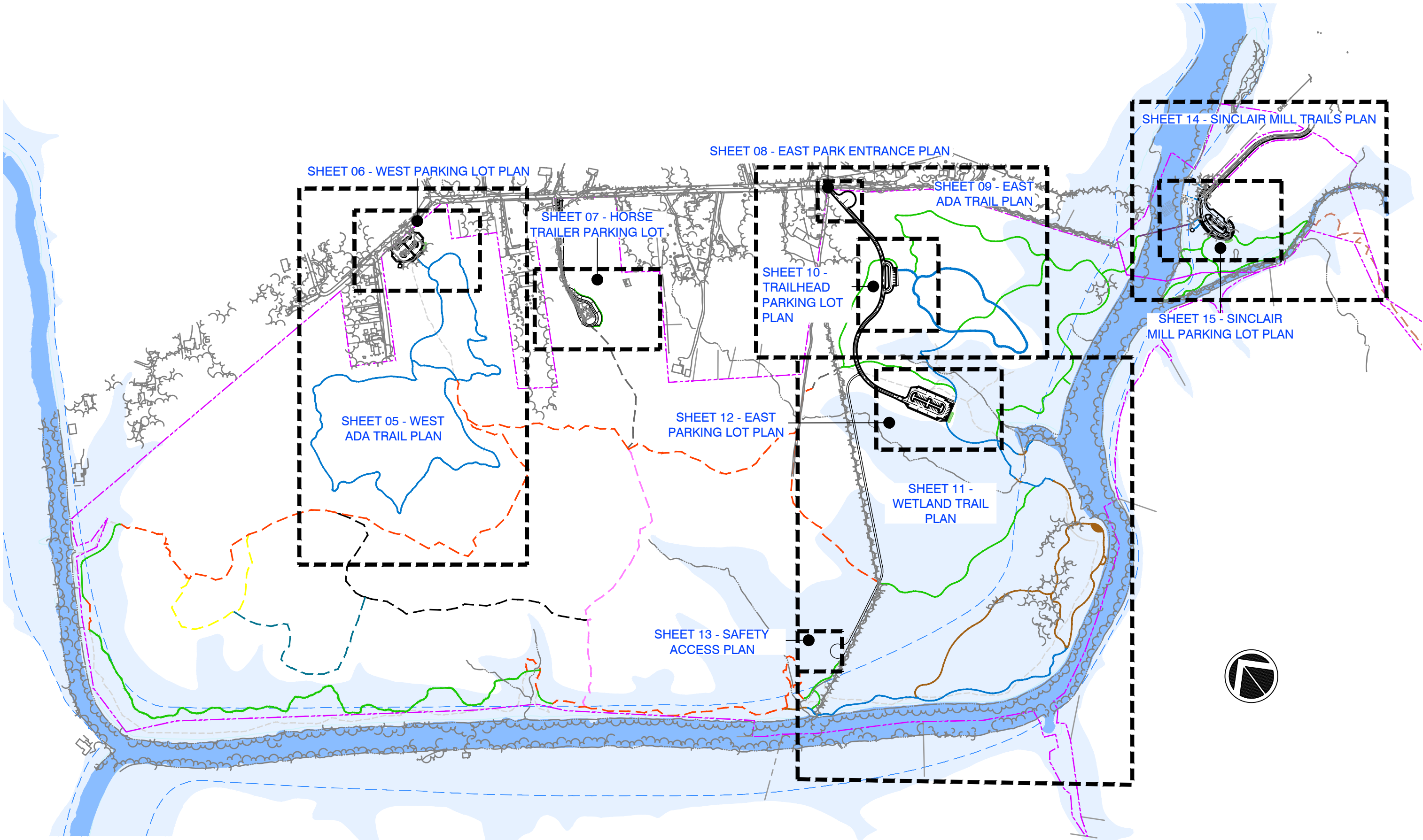
BOARDWALK



INTERNAL ACCESS ROAD



SHEET KEY (NTS):



BRIDGE*



*FUTURE BRIDGE CROSSING & TRAIL

EMERGENCY ACCESS ROAD

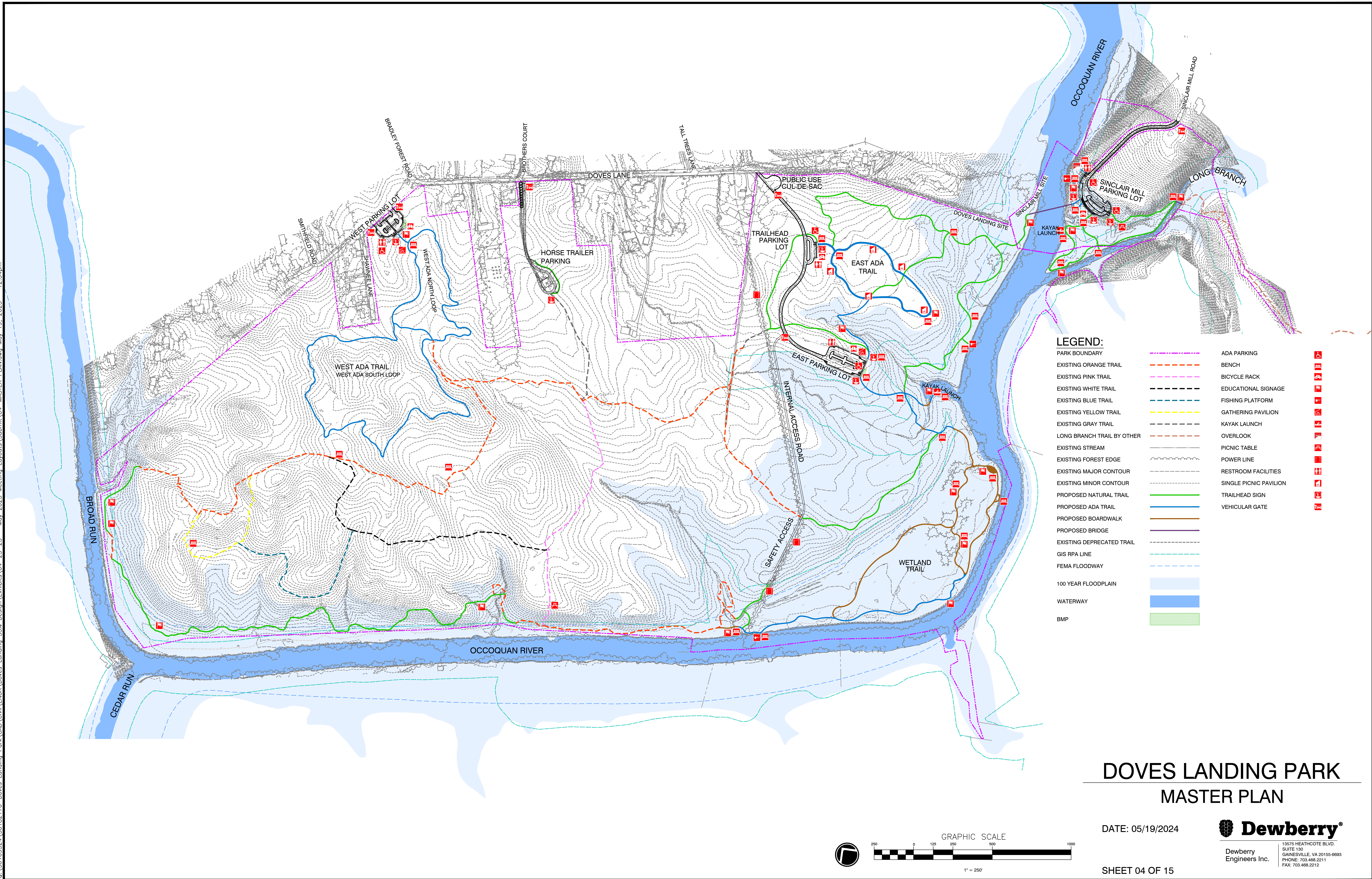


DOVES LANDING PARK
LEGEND, DETAILS & SHEET KEY

DATE: 05/19/2024

Dewberry
Dewberry
Engineers Inc.
13575 HEATHCOTE BLVD.
SUITE 150
GAINESVILLE, VA 20155-6693
PHONE: 703.468.2211
FAX: 703.468.2212

Q:\50189524\50182170-Doves Landing Park\CAD\Civil\ENGR\Doves Landing 35% Design\Exhibits\04-25-25 - May 2025 Meeting Layouts\Submit\04-MASTER PLAN.dwg May 19, 2025 - 12:54pm



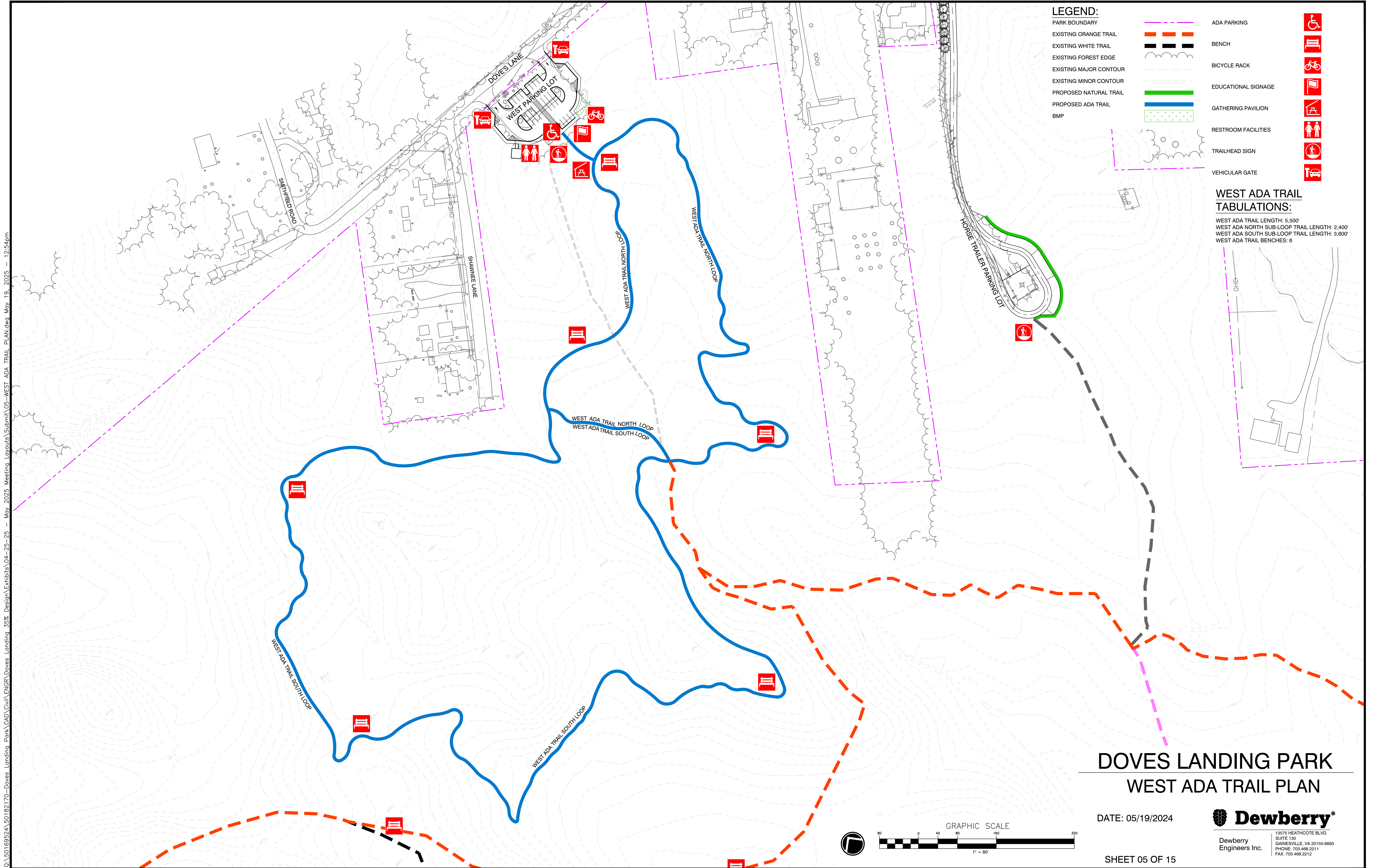
DOVES LANDING PARK MASTER PLAN

DATE: 05/19/2024

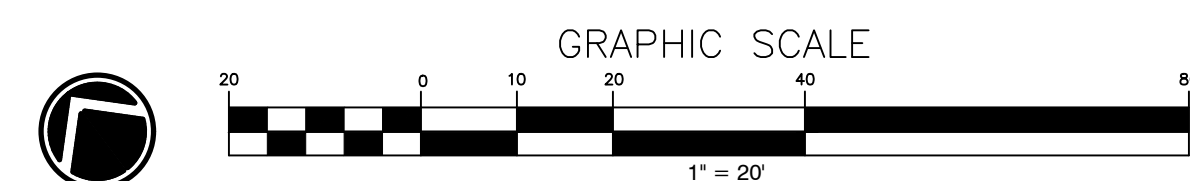
Dewberry
Engineers Inc.
13575 HEATHCOTE BLVD.
SUITE 150
GAINESVILLE, VA 20155-6693
PHONE: 703.468.2211
FAX: 703.468.2212

SHEET 04 OF 15

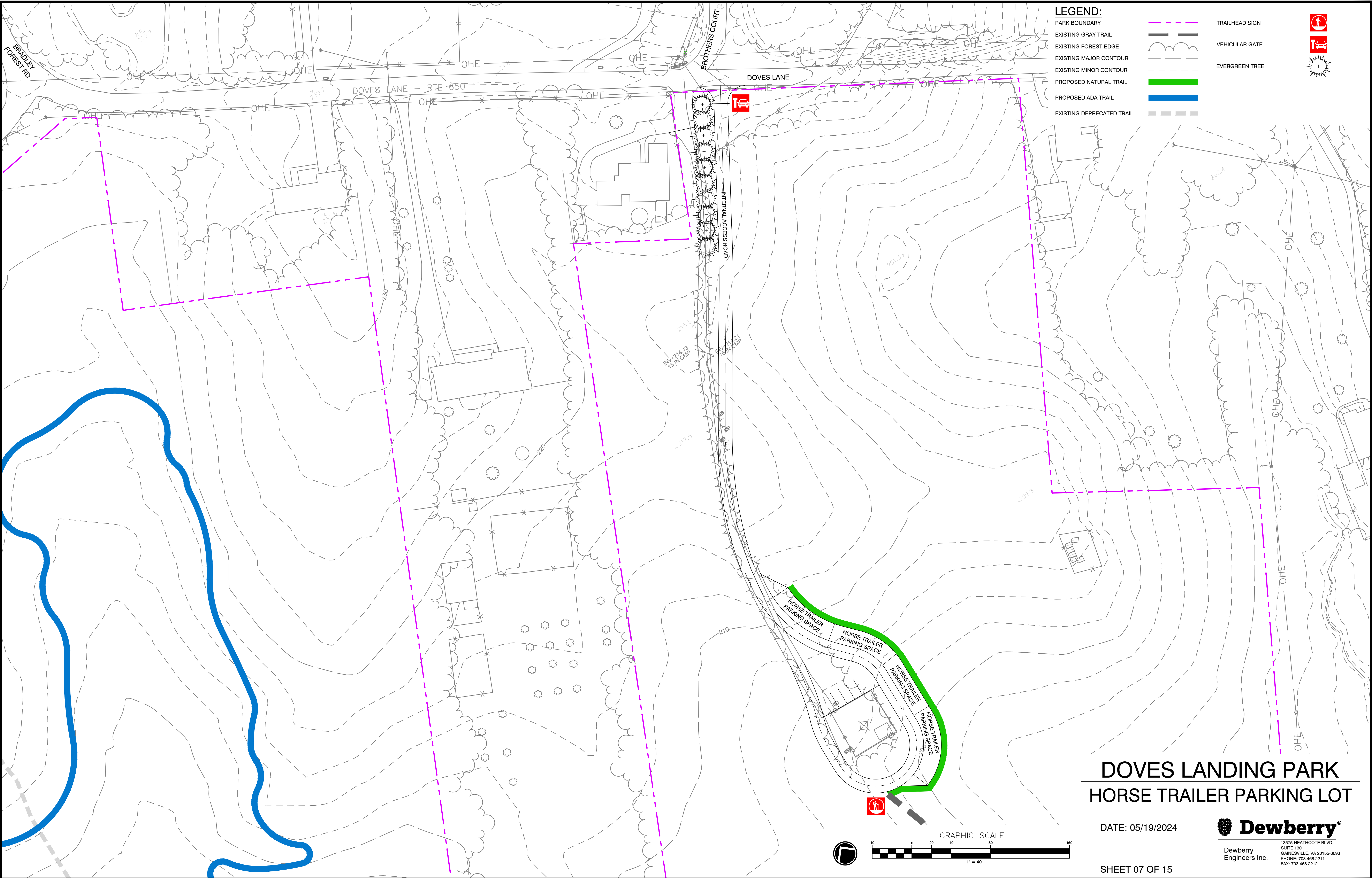
Q:\50169524\50182170-Doves Landing Park\CAD\Civil\ENGR\Drawings\05-Trail\05-WEST ADA TRAIL PLAN.dwg May 19, 2025 12:54pm



SHEET 06 OF 15








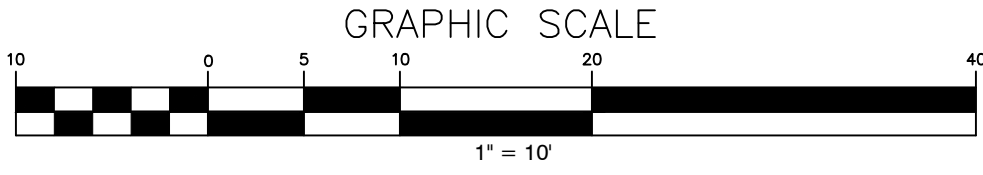
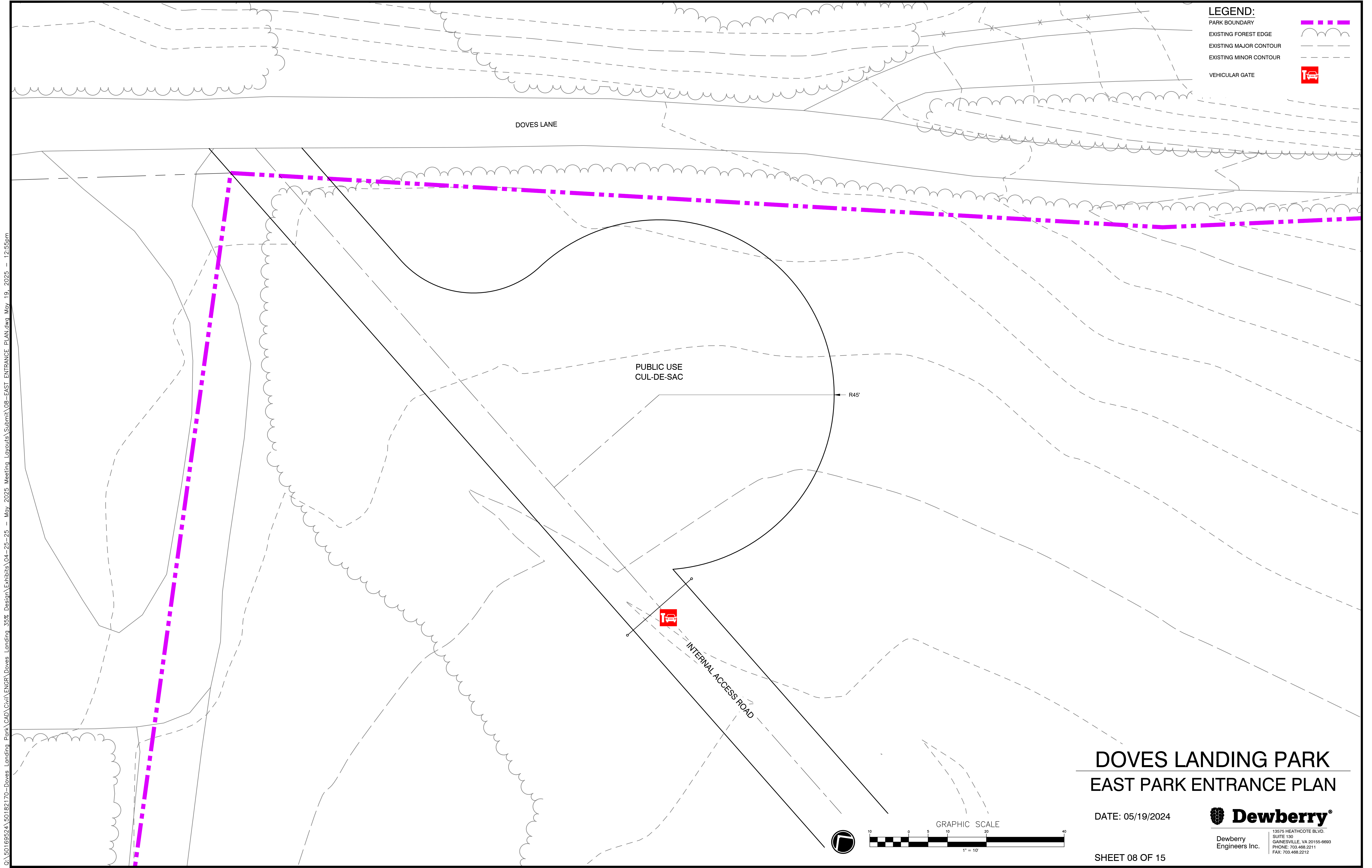
Q:\50169524\50182170-Doves Landing Park\CAD\Civil\ENGR\Doves Landing 35% Design\Layouts\Submit\07-HORSE TRAILER PARKING LOT.dwg May 19, 2025 - 12:55pm



Q:\50169524\50182170-Doves Landing Park\CAD\Civil\ENGR\Doves Landing 35% Design\Exhibits\04-25-25 - May 2025 Meeting Layouts\Submit\08-EAST ENTRANCE PLAN.dwg May 19, 2025 - 12:55pm

LEGEND:
PARK BOUNDARY
EXISTING FOREST EDGE
EXISTING MAJOR CONTOUR
EXISTING MINOR CONTOUR
VEHICULAR GATE



DOVES LANDING PARK

EAST PARK ENTRANCE PLAN

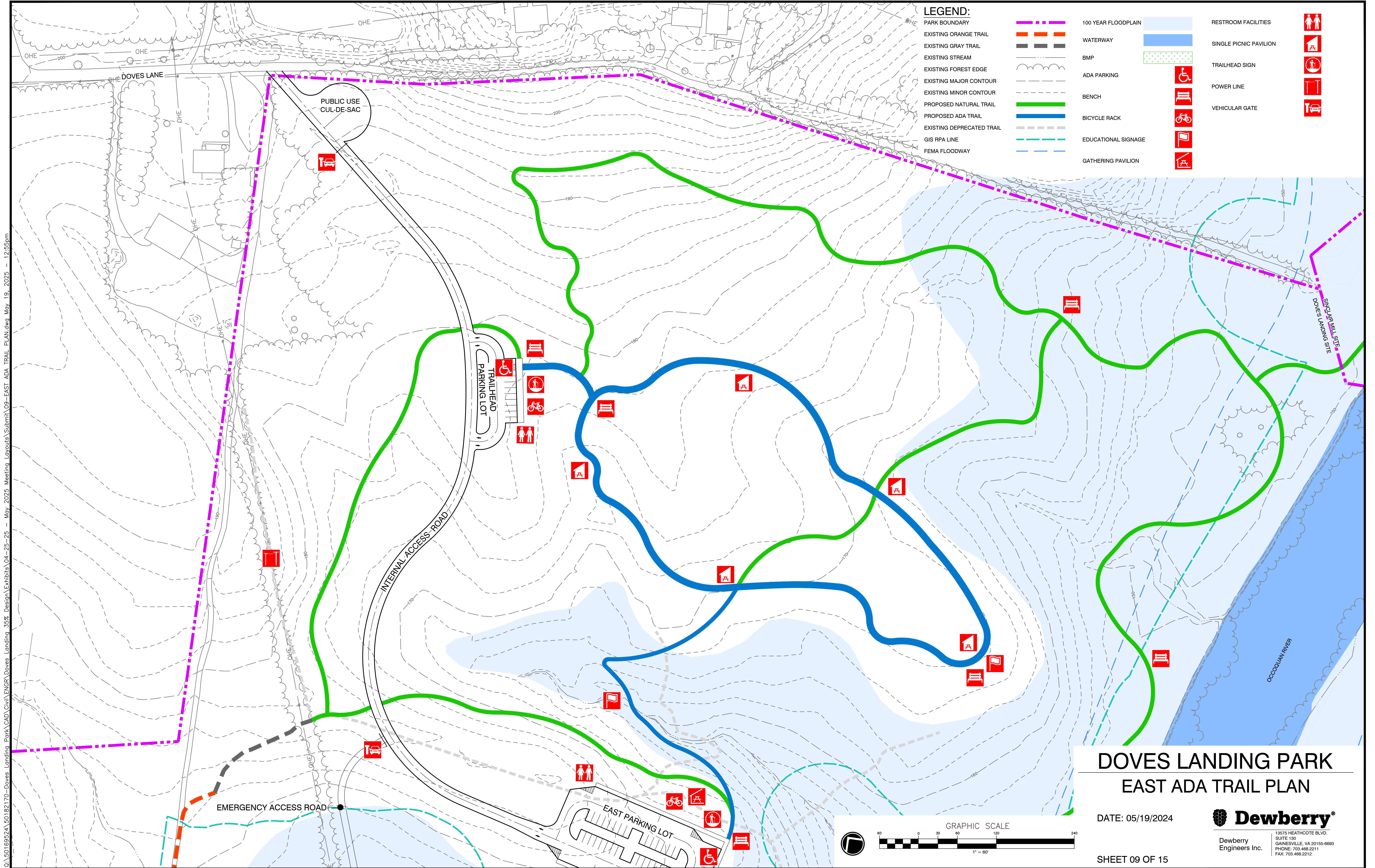
DATE: 05/19/2024

SHEET 08 OF 15


Dewberry
Engineers Inc.

13575 HEATHCOTE BLVD.
SUITE 150
GAINESVILLE, VA 20155-6693
PHONE: 703.468.2211
FAX: 703.468.2212

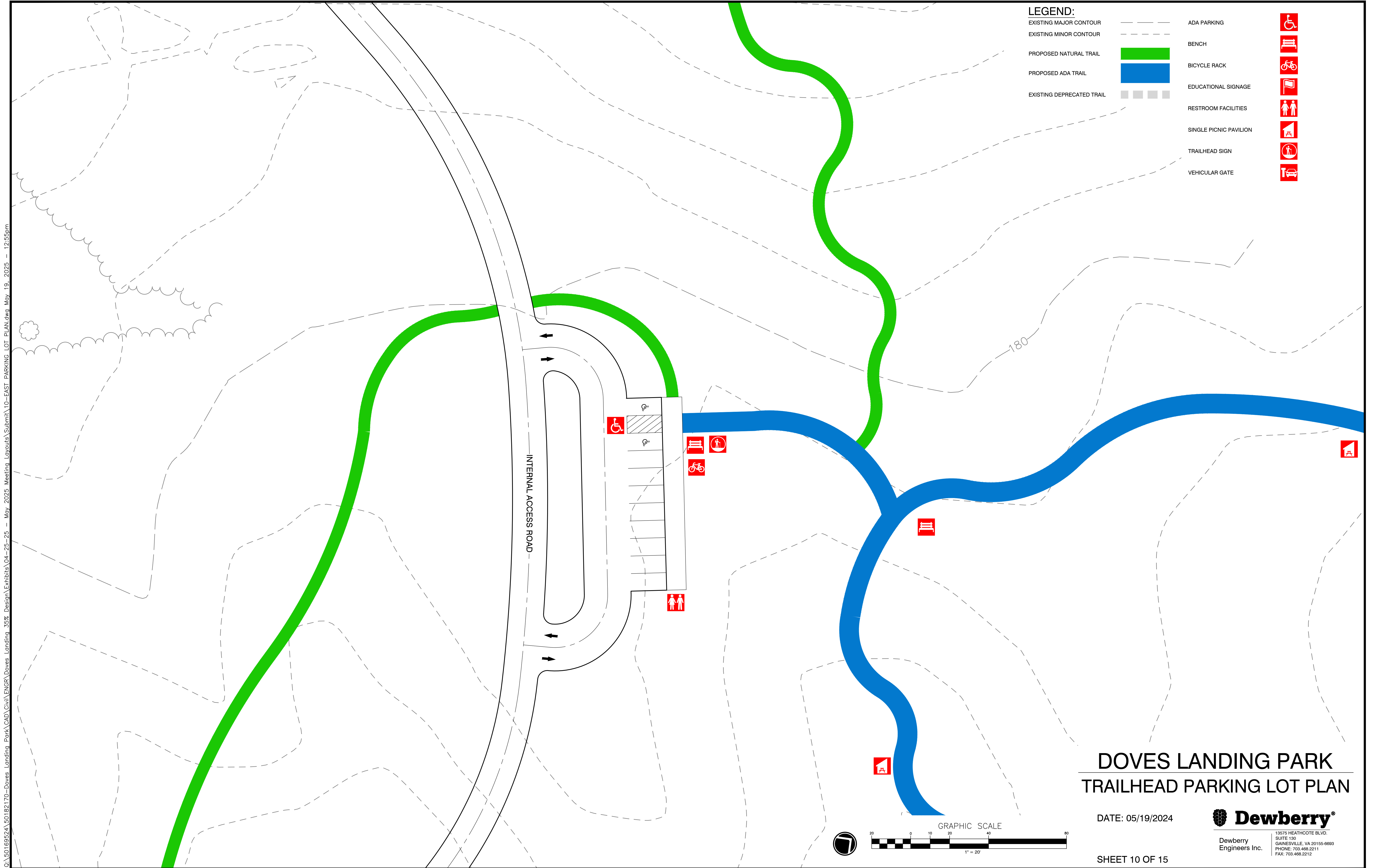
C:\50169524\50182170-Doves Landing Park\CAD\Civil\ENGR\Doves Landing 35% Design\Exhibits\04-25-25 - May 2025 Meeting Layouts\Submit\09-EAST ADA TRAIL PLAN.dwg May 19, 2025 12:55pm



Q:\50169524\50182170-Doves Landing_Park\CAD\Civil\ENGR\Doves Landing_35% Design\Exhibits\04-25-25 - May 2025 Meeting Layouts\Submit\10-EAST PARKING LOT PLAN.dwg, May 19, 2025 - 12:55pm

LEGEND:

- | | | | |
|---------------------------|--|------------------------|--|
| EXISTING MAJOR CONTOUR | | ADA PARKING | |
| EXISTING MINOR CONTOUR | | BENCH | |
| PROPOSED NATURAL TRAIL | | BICYCLE RACK | |
| PROPOSED ADA TRAIL | | EDUCATIONAL SIGNAGE | |
| EXISTING DEPRECATED TRAIL | | RESTROOM FACILITIES | |
| | | SINGLE PICNIC PAVILION | |
| | | TRAILHEAD SIGN | |
| | | VEHICULAR GATE | |



DOVES LANDING PARK
TRAILHEAD PARKING LOT PLAN

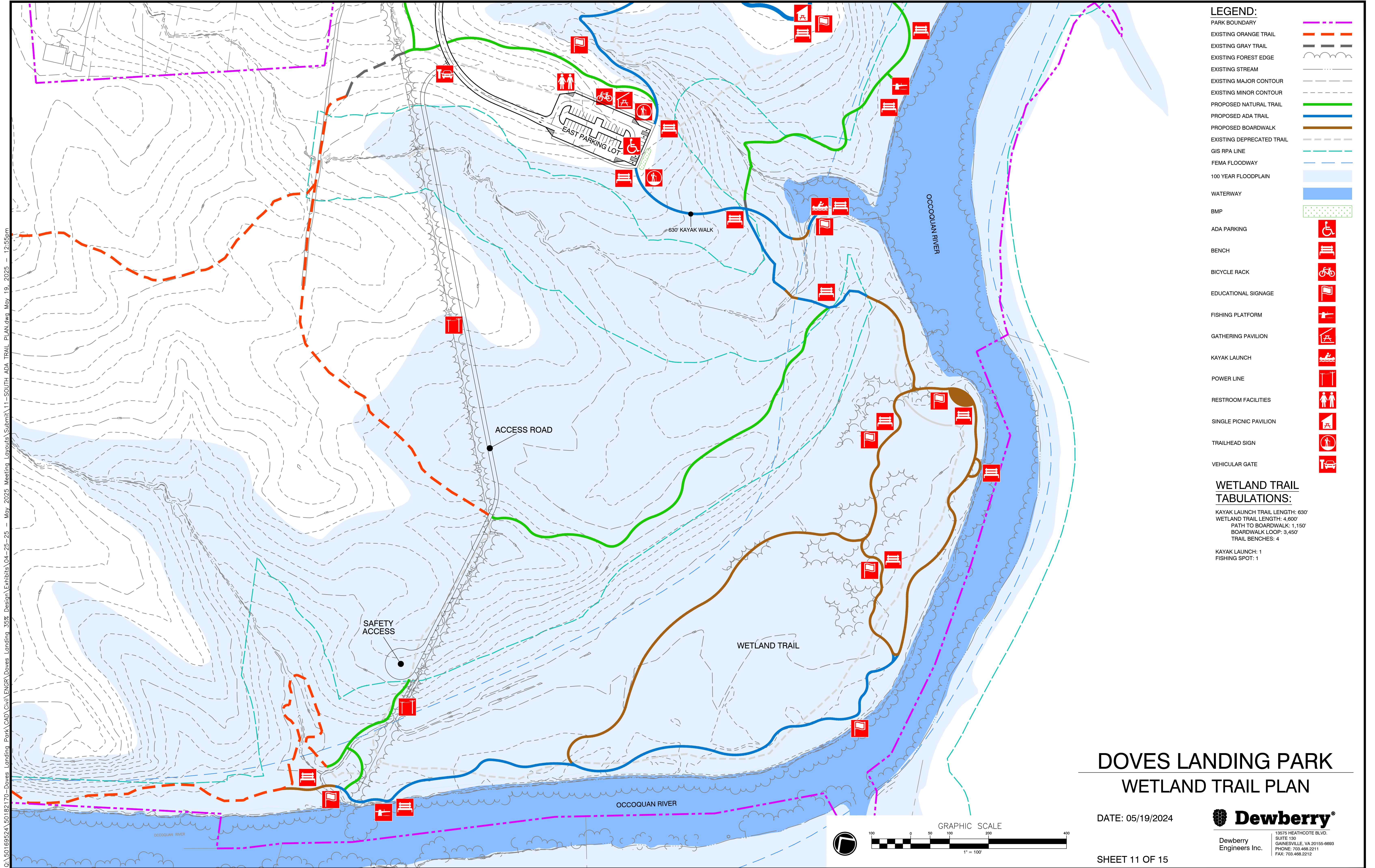
DATE: 05/19/2024

SHEET 10 OF 15

Dewberry
Engineers Inc.

13575 HEATHCOTE BLVD.
SUITE 150
GAINESVILLE, VA 20155-6693
PHONE: 703.468.2211
FAX: 703.468.2212

Q:\50169524\50182170-Doves Landing Park\CAD\Civil\ENGR\Drawings\04-25-25 - May 2025 Meeting Layouts\Submit\11-SOUTH ADA TRAIL PLAN.dwg, May 19, 2025 12:55pm



- LEGEND:**
- PARK BOUNDARY
 - EXISTING ORANGE TRAIL
 - EXISTING GRAY TRAIL
 - EXISTING FOREST EDGE
 - EXISTING STREAM
 - EXISTING MAJOR CONTOUR
 - EXISTING MINOR CONTOUR
 - PROPOSED NATURAL TRAIL
 - PROPOSED ADA TRAIL
 - PROPOSED BOARDWALK
 - EXISTING DEPRECATED TRAIL
 - GIS RPA LINE
 - FEMA FLOODWAY
 - 100 YEAR FLOODPLAIN
 - WATERWAY
 - BMP
 - ADA PARKING
 - BENCH
 - BICYCLE RACK
 - EDUCATIONAL SIGNAGE
 - FISHING PLATFORM
 - GATHERING PAVILION
 - KAYAK LAUNCH
 - POWER LINE
 - RESTROOM FACILITIES
 - SINGLE PICNIC PAVILION
 - TRAILHEAD SIGN
 - VEHICULAR GATE

**WETLAND TRAIL
TABULATIONS:**

KAYAK LAUNCH TRAIL LENGTH: 630'
WETLAND TRAIL LENGTH: 4,600'
PATH TO BOARDWALK: 1,150'
BOARDWALK LOOP: 3,450'
TRAIL BENCHES: 4

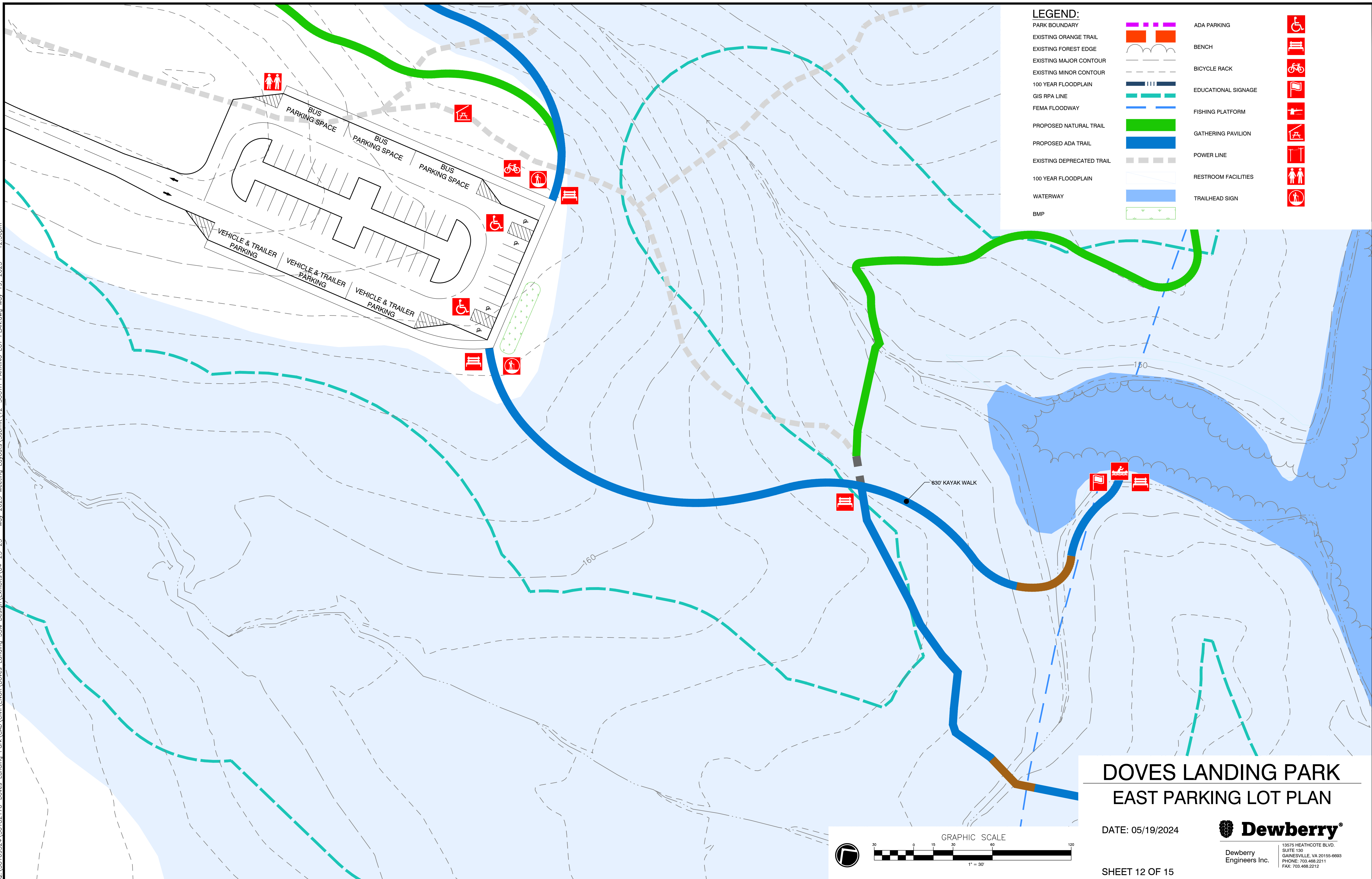
KAYAK LAUNCH: 1
FISHING SPOT: 1

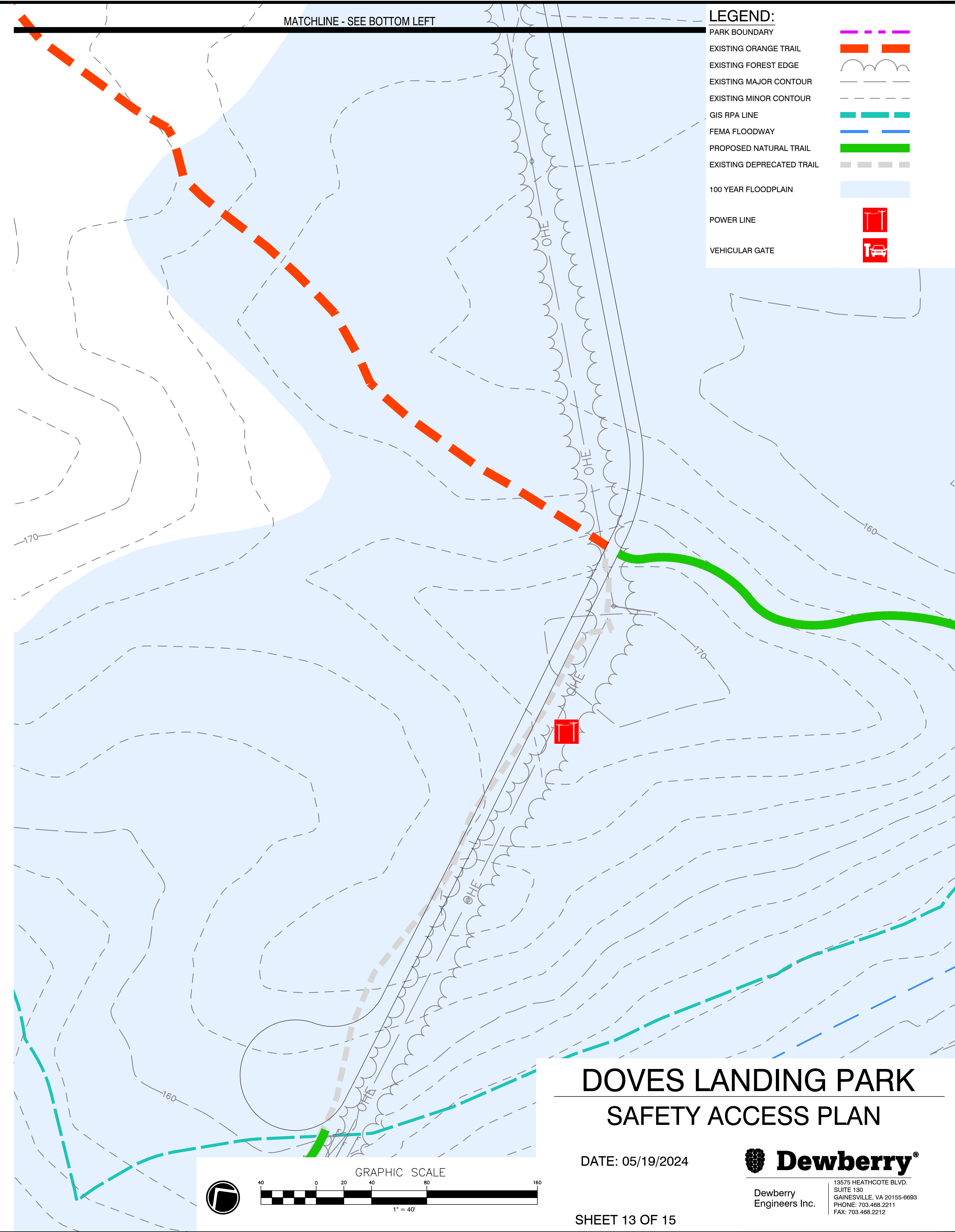
DOVES LANDING PARK WETLAND TRAIL PLAN

DATE: 05/19/2024

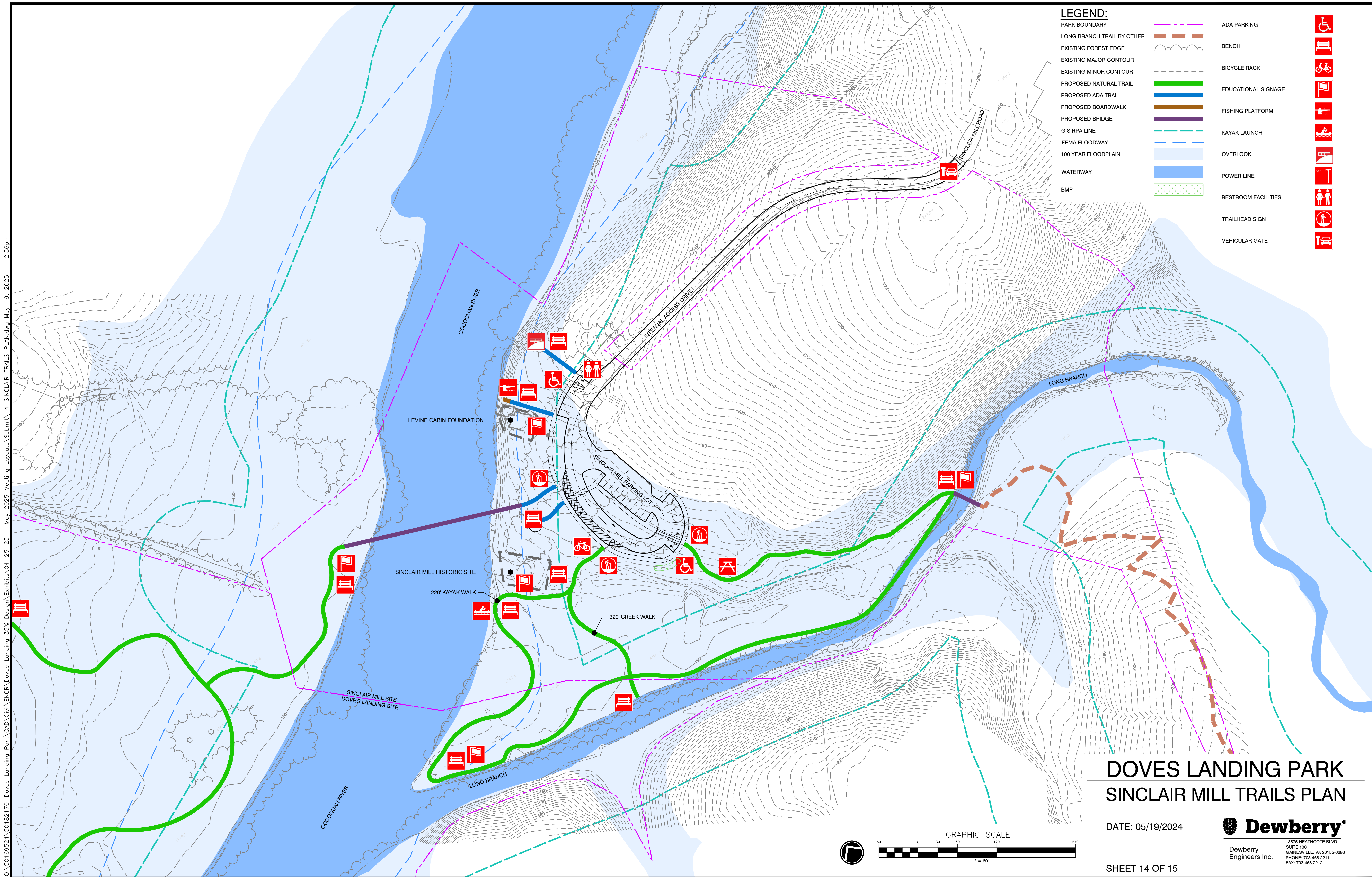
Dewberry
Engineers Inc.

13575 HEATHCOTE BLVD.
SUITE 150
GAINESVILLE, VA 20155-6693
PHONE: 703.468.2211
FAX: 703.468.2212





Q:\50169524\50182170-Doves Landing Park\CAD\Civil\ENGR\Drawings\04-25-25 - May 2025 Meeting Layouts\Submittal\14-SINCLAIR TRAILS PLAN.dwg May 19, 2025 - 12:56pm





Dewberry®

Dewberry
Engineers Inc.

13575 HEATHCOTE BLVD.
SUITE 130
GAINESVILLE, VA 20165-6693
PHONE: 703.468.2211