

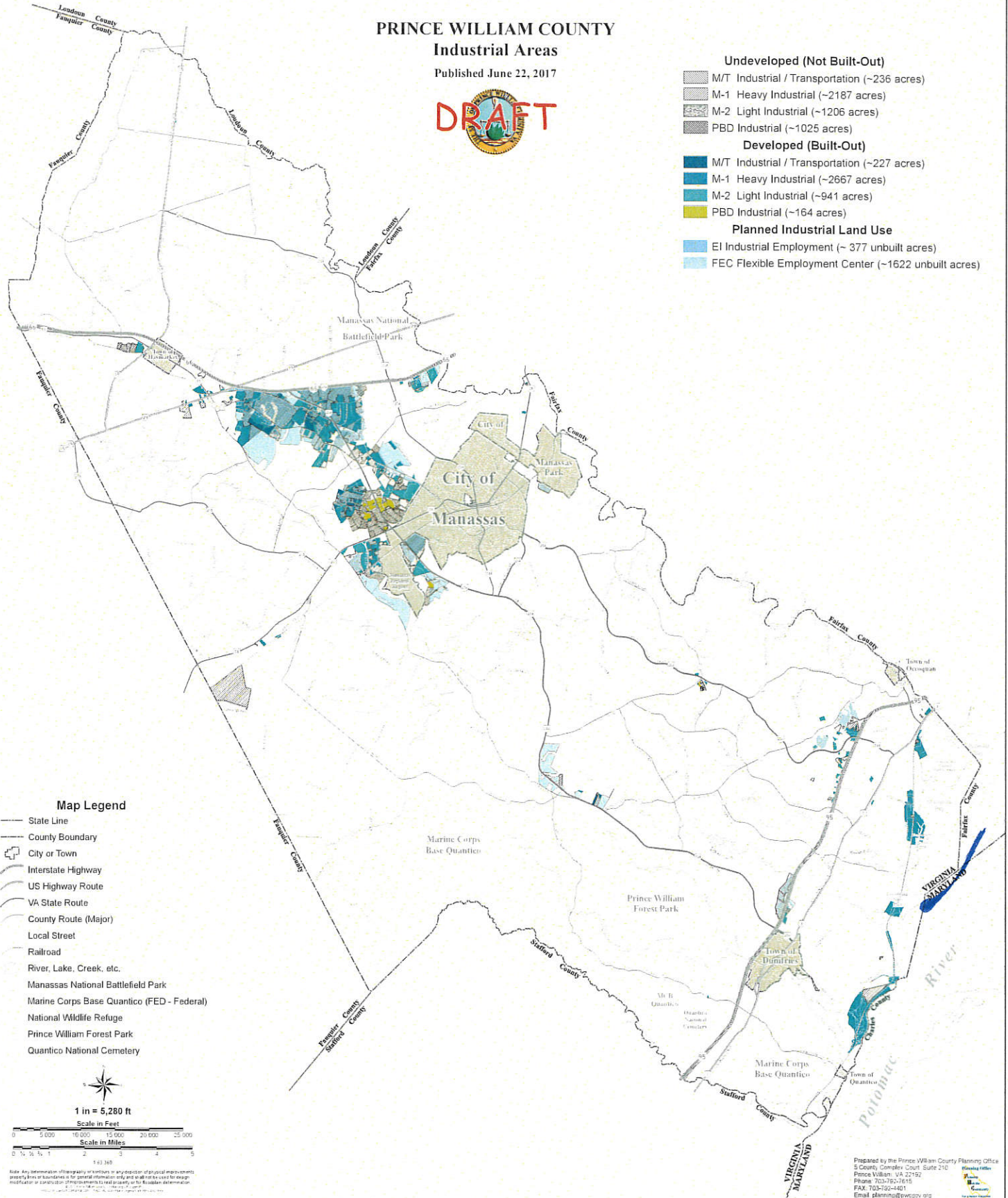
# PRINCE WILLIAM COUNTY

## Industrial Areas

Published June 22, 2017



- Undeveloped (Not Built-Out)**
- M/T Industrial / Transportation (~236 acres)
- M-1 Heavy Industrial (~2187 acres)
- M-2 Light Industrial (~1206 acres)
- PBD Industrial (~1025 acres)
- Developed (Built-Out)**
- M/T Industrial / Transportation (~227 acres)
- M-1 Heavy Industrial (~2667 acres)
- M-2 Light Industrial (~941 acres)
- PBD Industrial (~164 acres)
- Planned Industrial Land Use**
- EI Industrial Employment (~ 377 unbuilt acres)
- FEC Flexible Employment Center (~1622 unbuilt acres)



### Map Legend

- State Line
- County Boundary
- City or Town
- Interstate Highway
- US Highway Route
- VA State Route
- County Route (Major)
- Local Street
- Railroad
- River, Lake, Creek, etc.
- Manassas National Battlefield Park
- Marine Corps Base Quantico (FED - Federal)
- National Wildlife Refuge
- Prince William Forest Park
- Quantico National Cemetery



1 in = 5,280 ft



Note: Any representation of geography or borders in any depiction of physical improvements, property lines or boundaries is for general information only and shall not be used for design, modification or construction of improvements to real property or for any business determination.